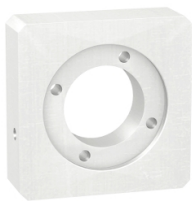


Product data sheet

Specifications



adaptation kit, Lexium 28, for assembly motor and gearbox

GBK1201308C

⚠ Discontinued on: Mar 31, 2023

⚠ To be end-of-service on: Mar 31, 2028

⚠ Discontinued - Service only

Main

Range Compatibility	Lexium 28
Product Or Component Type	Adaptation kit
Device Short Name	GBK
Accessory / Separate Part Category	Adaptation accessory
Product Compatibility	BCH2
Accessory / Separate Part Destination	For assembly motor and gearbox
Kit Composition	An adaptor plate Screws and bolts for mounting A shaft end adaptor
Gearbox External Diameter	120 mm

Complementary

Motor Flange Size	130 mm
Number Of Motor Stacks	1
Length	29.8 mm
Net Weight	1.35 kg

Packing Units

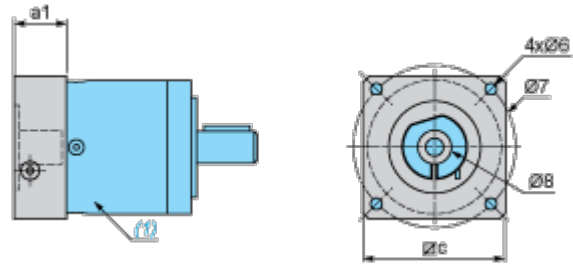
Unit Type Of Package 1	PCE
Number Of Units In Package 1	1
Package 1 Height	8.0 cm
Package 1 Width	16.2 cm
Package 1 Length	17.8 cm
Package 1 Weight	1.371 kg
Unit Type Of Package 2	S03
Number Of Units In Package 2	4
Package 2 Height	30.0 cm
Package 2 Width	30.0 cm
Package 2 Length	40.0 cm
Package 2 Weight	6.197 kg

Disclaimer: This documentation is not intended as a substitute for and is not to be used for determining suitability or reliability of these products for specific user applications

Dimensions Drawings

Dimensions Drawings

Dimensions



- (1) Gearbox
- Ø8 shaft end adaptor in case motor shaft diameter is smaller than gearbox input coupling diameter

Values in mm

a1	c	Ø6	Ø7	Ø8
36.8	130	M8	145	24 x 19 x 36

Values in in.

a1	c	Ø6	Ø7	Ø8
1.45	5.12	M8	5.71	0.94 x 0.02 x 1.42