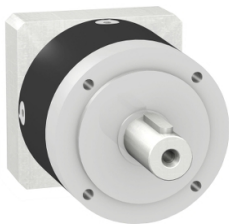


Product data sheet

Specifications



gearbox with straight teeth GBX- Ø
120 mm- reduction 8:1- < 8arcmin-
120 N.m

GBX1200080703F

⚠ Discontinued on: Mar 31, 2022

⚠ Discontinued

Main

Range Compatibility	Lexium 32
Product Or Component Type	Planetary gearbox
Gear Box Type	Straight teeth
Device Short Name	GBX
Gearbox External Diameter	120 mm
Product Compatibility	BSH0703... BMH0703...
Reduction Ratio	8:1

Complementary

Maximum Torsional Backlash	8 arc.min
Torsional Rigidity	12 N.m/arcmin
Housing Colour	Black
Housing Material	Black anodized aluminium
Shaft Material	C 45
Additional Information	Lubricated for life
Service Life In Hours	30000 h at 100 rpm at 30 °C
Efficiency	94 %
Maximum Radial Force Fr	1500 N at 100 rpm, force applied at mid-distance from output shaft during 30000 hour at 30 °C 2000 N at 100 rpm, force applied at mid-distance from output shaft during 10000 hour at 30 °C
Maximum Axial Force Fa	2100 N at 100 rpm, during 30000 hour at 30°C 2800 N at 100 rpm, during 10000 hour at 30°C
Continuous Output Torque	120 N.m at 100 rpm at 30 °C
Maximum Output Torque	192 N.m at 100 rpm at 30 °C
Net Weight	6 kg

Environment

Noise Level	65 dB at 1 m, no-load
Ip Degree Of Protection	Shaft output: IP54
Ambient Temperature For Operation	-25...90 °C

Disclaimer: This documentation is not intended as a substitute for and is not to be used for determining suitability or reliability of these products for specific user applications

Packing Units

Unit Type Of Package 1	PCE
Number Of Units In Package 1	1

Contractual warranty

Warranty	18 months
----------	-----------