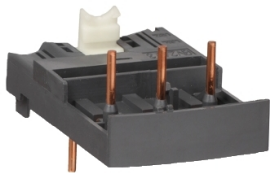


Product data sheet

Specifications



Combination blocks,TeSys Deca,with contactor LC1D09...D38

GV2AF3

Main

Range	Lineryg
Product Name	FT
Device Short Name	GV2AF
Product Or Component Type	Combination block
Accessory / Separate Part Category	Connection accessory
Range Compatibility	TeSys GV2 TeSys Deca

Complementary

Product Compatibility	LC1D09...D38
Poles Description	3P
[Ie] Rated Operational Current	32 A
Quantity Per Set	Set of 10
Net Weight	0.016 kg

Packing Units

Unit Type Of Package 1	PCE
Number Of Units In Package 1	1
Package 1 Height	9.500 cm
Package 1 Width	10.000 cm
Package 1 Length	15.000 cm
Package 1 Weight	22.000 g
Unit Type Of Package 2	BB1
Number Of Units In Package 2	10
Package 2 Height	9.500 cm
Package 2 Width	10.000 cm
Package 2 Length	15.000 cm
Package 2 Weight	268.000 g
Unit Type Of Package 3	S03
Number Of Units In Package 3	140
Package 3 Height	30.000 cm
Package 3 Width	30.000 cm

Disclaimer: This documentation is not intended as a substitute for and is not to be used for determining suitability or reliability of these products for specific user applications

Package 3 Length	40.000 cm
Package 3 Weight	4.196 kg

Contractual warranty

Warranty	18 months
----------	-----------

Sustainability

Green Premium™ label is Schneider Electric's commitment to delivering products with best-in-class environmental performance. Green Premium promises compliance with the latest regulations, transparency on environmental impacts, as well as circular and low-CO₂ products.

Guide to assessing product sustainability is a white paper that clarifies global eco-label standards and how to interpret environmental declarations.

[Learn more about Green Premium >](#)

[Guide to assess a product's sustainability >](#)



Transparency RoHS/REACH

Well-being performance

✓	Reach Free Of Svhc	
✓	Toxic Heavy Metal Free	
✓	Mercury Free	
✓	Rohs Exemption Information	Yes

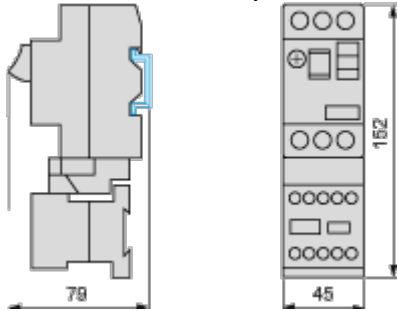
Certifications & Standards

Reach Regulation	REACH Declaration
Eu Rohs Directive	Compliant EU RoHS Declaration
China Rohs Regulation	China RoHS declaration
Environmental Disclosure	Product Environmental Profile
Weee	The product must be disposed on European Union markets following specific waste collection and never end up in rubbish bins
Circularity Profile	End of Life Information

Dimensions Drawings

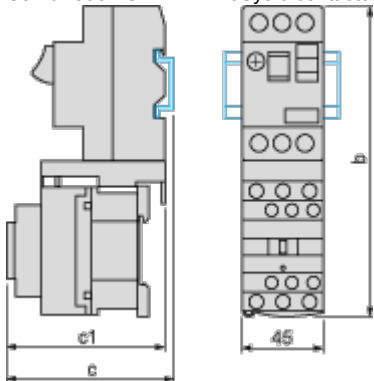
GV2AF01

Combination GV2ME + TeSys k contactor



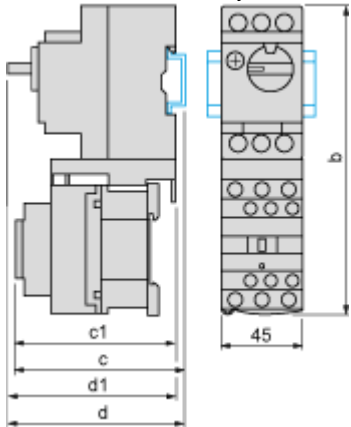
GV2AF3

Combination GV2ME + TeSys d contactor



GV2ME +	LC1D09...D18	LC1D25 and D32
b	176.4	186.8
c1	94.1	100.4
c	99.6	105.9

Combination GV2P + TeSys d contactor



GV2P +	LC1D09...D18	LC1D25 and D32
b	176.4	186.8
c1	100.1	106.4

GV2P +	LC1D09...D18	LC1D25 and D32
c	105.6	111.9
d1	95	95
d	100.5	100.5