

Product data sheet

Specifications



advanced touchscreen panel,
Harmony GTU, 7inch wide display,
800 x 480pixels WVGA

HMIDT351

Main

| | |
|---------------------------|----------------------------|
| Range Of Product | Harmony GTU |
| Product Or Component Type | Advanced touchscreen panel |
| Terminal Type | Touchscreen display |
| [Us] Rated Supply Voltage | 12...24 V DC power supply |
| Supply Voltage Limits | 10.8...28.8 V |
| Power Consumption In W | 6.5 W |
| Inrush Current | 30 A |

Complementary

| | |
|------------------------|----------------------------------|
| Touchscreen Resolution | 1024 x 1024 |
| Pixel Resolution | 800 x 480 |
| Display Size | 7 inch |
| Aspect Ratio | 4:3 |
| Display Type | Colour TFT LCD |
| Display Resolution | 800 x 480 pixels WVGA |
| Display Colour | 262144 colors |
| Backlight Lifespan | 50000 hours |
| Touch Panel | Single touch analogue resistive |
| Type Of Cooling | Natural convection |
| Type Of Installation | Indoor installation |
| Cut-Out Dimensions | 190 (+ 1/- 0) x 135 (+ 1/- 0) mm |
| Width | 203.6 mm |
| Height | 148.6 mm |
| Depth | 36 mm |
| Net Weight | 1.2 kg |

Environment

| | |
|---------------------------|--|
| Ip Degree Of Protection | Front panel: IP66 Front panel: IP67 |
| Nema Degree Of Protection | NEMA 4X front panel |

Disclaimer: This documentation is not intended as a substitute for and is not to be used for determining suitability or reliability of these products for specific user applications

| | |
|---------------------------------------|---|
| Standards | UL 508 ANSI/ISA 12-12-01 Class I division 2 CSA C22.2 No 213 CSA C22.2 No 142 IEC 61132-2 |
| Product Certifications | CULus RCM CE KC UKCA UKEX |
| Ambient Air Temperature For Operation | 0...60 °C conforming to IEC 61131-2 |
| Ambient Air Temperature For Storage | -20...60 °C |
| Relative Humidity | 10...90 % non-condensing |
| Operating Altitude | 2000 m |
| Vibration Resistance | 3.5 mm constant amplitude (f = 5...9 Hz) conforming to IEC 61131-2 9.8 m/s² (f = 9...150 Hz) conforming to IEC 61131-2 |
| Shock Resistance | 147 m/s² conforming to IEC 61131-2 |
| Electromagnetic Compatibility | Electrostatic discharge immunity test level 3 conforming to IEC 61000-4-2 |

Packing Units

| | |
|------------------------------|-----------|
| Unit Type Of Package 1 | PCE |
| Number Of Units In Package 1 | 1 |
| Package 1 Height | 13.5 cm |
| Package 1 Width | 21 cm |
| Package 1 Length | 26.5 cm |
| Package 1 Weight | 1.6 kg |
| Unit Type Of Package 2 | S03 |
| Number Of Units In Package 2 | 2 |
| Package 2 Height | 30 cm |
| Package 2 Width | 30 cm |
| Package 2 Length | 40 cm |
| Package 2 Weight | 3.78 kg |
| Unit Type Of Package 3 | CAR |
| Number Of Units In Package 3 | 8 |
| Package 3 Height | 33.5 cm |
| Package 3 Width | 45.5 cm |
| Package 3 Length | 55 cm |
| Package 3 Weight | 13.012 kg |

Contractual warranty

| | |
|----------|-----------|
| Warranty | 18 months |
|----------|-----------|

Sustainability

Green Premium™ label is Schneider Electric's commitment to delivering products with best-in-class environmental performance. Green Premium promises compliance with the latest regulations, transparency on environmental impacts, as well as circular and low-CO₂ products.

Guide to assessing product sustainability is a white paper that clarifies global eco-label standards and how to interpret environmental declarations.

[Learn more about Green Premium >](#)

[Guide to assess a product's sustainability >](#)



Transparency RoHS/REACH

Well-being performance



Mercury Free



RoHS Exemption Information

Yes

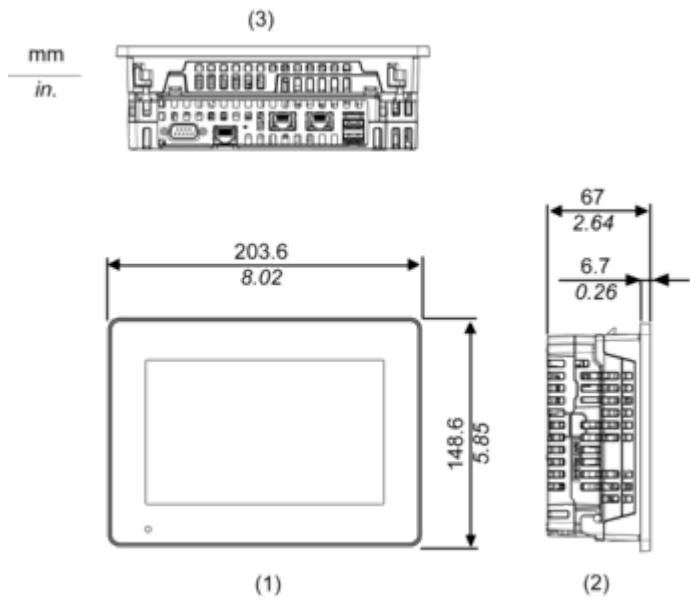
Certifications & Standards

| | |
|---------------------------|---|
| Reach Regulation | REACH Declaration |
| Eu Rohs Directive | Pro-active compliance (Product out of EU RoHS legal scope) |
| China Rohs Regulation | China RoHS declaration |
| Environmental Disclosure | Product Environmental Profile |
| Weee | The product must be disposed on European Union markets following specific waste collection and never end up in rubbish bins |
| Circularity Profile | End of Life Information |
| California Proposition 65 | WARNING: This product can expose you to chemicals including: Lead and lead compounds, which is known to the State of California to cause cancer and birth defects or other reproductive harm. For more information go to www.P65Warnings.ca.gov |

Dimensions Drawings

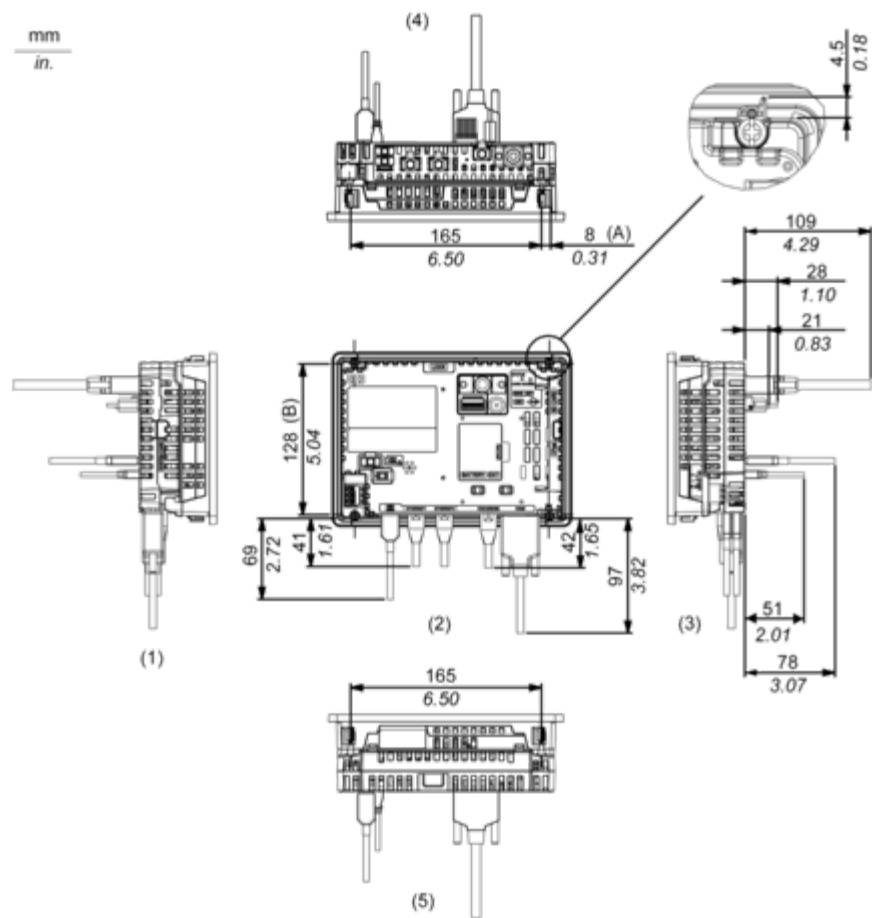
External Dimensions

Display Unit with Box Module



- 1 Front
- 2 Left
- 3 Bottom

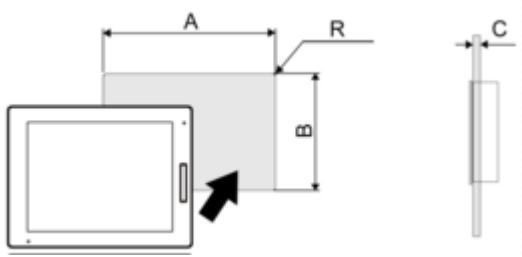
Installation with Installation Fasteners and Dimensions with Cables



Mounting and Clearance

Mounting

Panel Cut Dimensions



Dimensions in mm

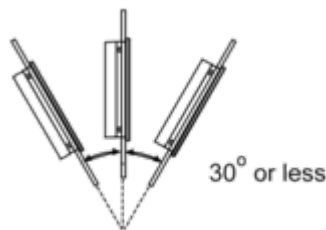
| A | B | C | R |
|-------------|-------------|---------|--------|
| 190 (+1/-0) | 135 (+1/-0) | 1.6...5 | 3 max. |

Dimensions in in.

| A | B | C | R |
|-----------------|-----------------|------------|-----------|
| 7.48 (+0.04/-0) | 5.31 (+0.04/-0) | 0.06...0.2 | 0.12 max. |

Installation Requirements

Mounting Angle



When installing this product in a slanted position with an incline more than 30°, the ambient temperature must not exceed 40 °C (104 °F). You may need to use forced air cooling (fan, A/C) to ensure the ambient operating temperature is 40 °C or less (104 °F or less).

Clearance

