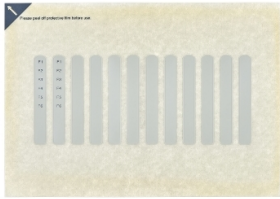


Product data sheet

Specifications



Label insert for Harmony GTO 3.5-inch models

HMIZLYG01

 **Discontinued on:** Jun 30, 2023

 **Discontinued**

Main

Range Of Product	Harmony GTO
Accessory / Separate Part Designation	Set of 1 sheet of 12 changeable legends
Accessory / Separate Part Type	Legend
Accessory / Separate Part Category	Marking accessories

Complementary

Product Compatibility	HMIGTO1300 HMIGTO1310
-----------------------	--------------------------

Packing Units

Unit Type Of Package 1	PCE
Number Of Units In Package 1	1
Package 1 Height	0.4 cm
Package 1 Width	21.0 cm
Package 1 Length	29.5 cm
Package 1 Weight	199.0 g

Disclaimer: This documentation is not intended as a substitute for and is not to be used for determining suitability or reliability of these products for specific user applications

Sustainability

Green Premium™ label is Schneider Electric's commitment to delivering products with best-in-class environmental performance. Green Premium promises compliance with the latest regulations, transparency on environmental impacts, as well as circular and low-CO₂ products.

Guide to assessing product sustainability is a white paper that clarifies global eco-label standards and how to interpret environmental declarations.

[Learn more about Green Premium >](#)

[Guide to assess a product's sustainability >](#)

Eu Rohs Directive	Not applicable, out of EU RoHS legal scope
California Proposition 65	WARNING: This product can expose you to chemicals including: Lead and lead compounds, which is known to the State of California to cause cancer and birth defects or other reproductive harm. For more information go to www.P65Warnings.ca.gov