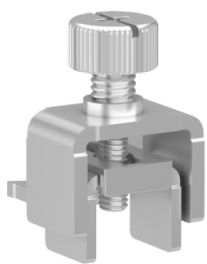


Product data sheet

Specifications



Harmony ST6 & STW6, Installation Fastener

HMIZSFIXTF1

Main

Range Of Product	Harmony ST6 & STW6
Accessory / Separate Part Type	Mounting kit
Accessory / Separate Part Category	Mounting and fixing accessory
Quantity Per Set	Set of 2 Set of 2 Set of 2 Set of 3

Complementary

Product Compatibility	Touch panel 7 inch Touch panel 10 inch Touch panel 12 inch Touch panel 15 inch
Accessory / Separate Part Destination	small touch screen panel
Kit Composition	2 combi-head screws and clampers 3 combi-head screws and clampers

Packing Units

Unit Type Of Package 1	PCE
Number Of Units In Package 1	1
Package 1 Height	2.0 cm
Package 1 Width	3.0 cm
Package 1 Length	6.0 cm
Package 1 Weight	56.0 g
Unit Type Of Package 2	S02
Number Of Units In Package 2	10
Package 2 Height	15.0 cm
Package 2 Width	30.0 cm
Package 2 Length	40.0 cm
Package 2 Weight	818.0 g

Disclaimer: This documentation is not intended as a substitute for and is not to be used for determining suitability or reliability of these products for specific user applications

Sustainability

Green Premium™ label is Schneider Electric’s commitment to delivering products with best-in-class environmental performance. Green Premium promises compliance with the latest regulations, transparency on environmental impacts, as well as circular and low-CO₂ products.

Guide to assessing product sustainability is a white paper that clarifies global eco-label standards and how to interpret environmental declarations.

[Learn more about Green Premium >](#)

[Guide to assess a product’s sustainability >](#)

Eu Rohs Directive	Not applicable, out of EU RoHS legal scope
California Proposition 65	WARNING: This product can expose you to chemicals including: Lead and lead compounds, which is known to the State of California to cause cancer and birth defects or other reproductive harm. For more information go to www.P65Warnings.ca.gov