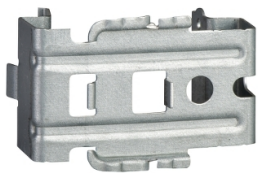


# Product data sheet

Specifications



## Multifix Eco - Beam Fixing Smart

IMT36236

⚠ Discontinued on: Sep 30, 2020

⚠ End-of-service on: Oct 26, 2020

⚠ Discontinued

### Main

Range Of Product	Multifix
Range Compatibility	Multifix Eco
Product Or Component Type	Beam fixing
Quantity Per Set	Set of 20

### Complementary

Mounting Support	SODRA smart wooden beam
Material	Steel (pre-galvanized)
Length	44 mm
Width	71 mm
Depth	50 mm
Net Weight	0.044 kg

### Environment

Ambient Air Temperature For Operation	-25...60 °C
---------------------------------------	-------------

### Packing Units

Unit Type Of Package 1	PCE
Number Of Units In Package 1	1
Package 1 Height	5 cm
Package 1 Width	7.1 cm
Package 1 Length	4.4 cm
Package 1 Weight	44 g

### Contractual warranty

Warranty	18 months
----------	-----------

Disclaimer: This documentation is not intended as a substitute for and is not to be used for determining suitability or reliability of these products for specific user applications

## Sustainability

**Green Premium™ label** is Schneider Electric's commitment to delivering products with best-in-class environmental performance. Green Premium promises compliance with the latest regulations, transparency on environmental impacts, as well as circular and low-CO<sub>2</sub> products.

**Guide to assessing product sustainability** is a white paper that clarifies global eco-label standards and how to interpret environmental declarations.

[Learn more about Green Premium >](#)

[Guide to assess a product's sustainability >](#)

## Well-being performance

✓	Reach Free Of Svhc	
✓	Toxic Heavy Metal Free	
✓	Mercury Free	
✓	Rohs Exemption Information	Yes
Reach Regulation		<a href="#">REACH Declaration</a>
Eu Rohs Directive		Pro-active compliance (Product out of EU RoHS legal scope) <a href="#">EU RoHS Declaration</a>
China Rohs Regulation		<a href="#">China RoHS declaration</a> Pro-active China RoHS declaration (out of China RoHS legal scope)