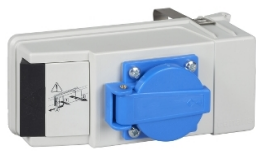


Product data sheet

Specifications



Connector, Canalis KB, 16A,
L+N+PE with phase selection, with
fuse NF 8.5x31.5mm and VDE
power socket, not wired, DALI

KBC16DCP2

Main

Range	Canalis
Offer Type	Classic Control system
Product Or Component Type	Connector
Device Application	Power socket distribution
Range Compatibility	Canalis KBA busbar trunking Canalis KBB busbar trunking
[Ie] Rated Operational Current	16 A at 35 °C
[Ue] Rated Operational Voltage	230...400 V
Network Frequency	50/60 Hz
Busbar Trunking Polarity	L2 + L1 + L3 + N + PE
Protection Type	Fuse
Fuse Type	Cylindrical: 8.5 x 31.5 mm - gG conforming to NF
Communication Port Protocol	DALI
Tap-Off Unit Polarity	3L+N+PE
Tap-Off Unit Connector Type	With fixed polarity
Tap-Off Unit Socket Description	VDE 2P+E 10/16 A 250V
Provided Equipment	Fuse not supplied
Colour	White (RAL 9003)

Complementary

[Ui] Rated Insulation Voltage	690 V
Width	160 mm
Depth	53 mm
Height	68 mm
Net Weight	90 g
Standards	EN/IEC 61439-6 EN/IEC 60439-2

Environment

Ip Degree Of Protection	IP55 conforming to EN/IEC 60529
-------------------------	---------------------------------

Packing Units

Disclaimer: This documentation is not intended as a substitute for and is not to be used for determining suitability or reliability of these products for specific user applications

Unit Type Of Package 1	PCE
Number Of Units In Package 1	1
Package 1 Height	7.5 cm
Package 1 Width	8 cm
Package 1 Length	16 cm
Package 1 Weight	250 g

Contractual warranty

Warranty	18 months
----------	-----------

Sustainability

Green Premium™ label is Schneider Electric’s commitment to delivering products with best-in-class environmental performance. Green Premium promises compliance with the latest regulations, transparency on environmental impacts, as well as circular and low-CO₂ products.

Guide to assessing product sustainability is a white paper that clarifies global eco-label standards and how to interpret environmental declarations.

[Learn more about Green Premium >](#)

[Guide to assess a product’s sustainability >](#)



Transparency RoHS/REACH

Well-being performance

✓ Reach Free Of Svhc

✓ Halogen Free Plastic Parts Product

Certifications & Standards

Reach Regulation	REACH Declaration
Eu Rohs Directive	Compliant EU RoHS Declaration
China Rohs Regulation	China RoHS declaration Pro-active China RoHS declaration (out of China RoHS legal scope)
Environmental Disclosure	Product Environmental Profile
Weee	The product must be disposed on European Union markets following specific waste collection and never end up in rubbish bins
Circularity Profile	No need of specific recycling operations

Dimension Drawings

