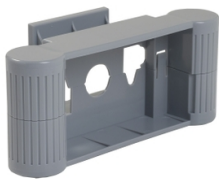



Product data sheet

Specifications



Motor Management, TeSys T, motor controller, hand held kit to use with LTMCU as a portable device

LTM9KCU

 **Discontinued on:** Aug 27, 2021

 **Discontinued**

Main

Range	TeSys
Product Or Component Type	Display mounting support
Accessory / Separate Part Category	Support accessory
Range Compatibility	TeSys TeSys T LTMCU operator control unit
Material	Plastic

Complementary

Fixing Mode	Snap-on
Mounting Mode	Magnetic

Packing Units

Unit Type Of Package 1	PCE
Number Of Units In Package 1	1
Package 1 Height	8.3 cm
Package 1 Width	8.8 cm
Package 1 Length	18.5 cm
Package 1 Weight	215 g

Disclaimer: This documentation is not intended as a substitute for and is not to be used for determining suitability or reliability of these products for specific user applications

Sustainability

Green Premium™ label is Schneider Electric's commitment to delivering products with best-in-class environmental performance. Green Premium promises compliance with the latest regulations, transparency on environmental impacts, as well as circular and low-CO₂ products.

Guide to assessing product sustainability is a white paper that clarifies global eco-label standards and how to interpret environmental declarations.

[Learn more about Green Premium >](#)

[Guide to assess a product's sustainability >](#)



Transparency RoHS/REACH

Well-being performance

✓ Mercury Free

✓ Rohs Exemption Information [Yes](#)

✓ Pvc Free

✓ Halogen Free Plastic Parts Product

Certifications & Standards

Eu Rohs Directive	Compliant EU RoHS Declaration
China Rohs Regulation	China RoHS declaration Product out of China RoHS scope. Substance declaration for your information
Environmental Disclosure	Product Environmental Profile
Weee	The product must be disposed on European Union markets following specific waste collection and never end up in rubbish bins
Circularity Profile	End of Life Information