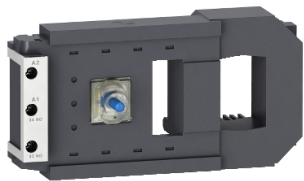


# Product data sheet

Specifications



## TeSys F - specific contactor coil - 240 V AC 40...400 Hz low consumption

LX9FG240

⚠ To be discontinued on: Dec 31, 2028

⚠ To be discontinued

### Main

Range	TeSys
Product Or Component Type	Specific contactor coil
Device Short Name	LX9FG
Range Compatibility	TeSys TeSys F LC1F contactor
Product Compatibility	LC1F185 LC1F225
Control Circuit Type	AC at 40...400 Hz low consumption
[Uc] Control Circuit Voltage	240 V AC 40...400 Hz
Inductance Of Closed Circuit	7.22 H
Average Resistance	50.6 Ohm inrush at 20 °C 2060 Ohm holding at 20 °C
Operating Time	130 ms opening 35 ms closing
Mechanical Durability	10 Mcycles
Maximum Operating Rate	2400 cyc/h 55 °C

### Complementary

Coil Technology	Without built-in suppressor module
Control Circuit Voltage Limits	Operational: 0.85...1.1 Uc (at 55 °C) Drop-out: 0.2...0.55 Uc (at 55 °C)
Inrush Power In Va	950...1180 VA 40...400 Hz (at 20 °C)
Hold-In Power Consumption In Va	8.9...10.9 VA 40...400 Hz (at 20 °C)
Heat Dissipation	8...9.8 W

### Environment

Ambient Air Temperature For Operation	-5...55 °C
Net Weight	0.55 kg

### Packing Units

Unit Type Of Package 1	PCE
Number Of Units In Package 1	1
Package 1 Height	7.5 cm
Package 1 Width	10.5 cm

Disclaimer: This documentation is not intended as a substitute for and is not to be used for determining suitability or reliability of these products for specific user applications

Package 1 Length	17.7 cm
Package 1 Weight	585.0 g
Unit Type Of Package 2	S03
Number Of Units In Package 2	14
Package 2 Height	30.0 cm
Package 2 Width	30.0 cm
Package 2 Length	40.0 cm
Package 2 Weight	8.636 kg

## Contractual warranty

Warranty	18 months
----------	-----------

## Sustainability

**Green Premium™ label** is Schneider Electric's commitment to delivering products with best-in-class environmental performance. Green Premium promises compliance with the latest regulations, transparency on environmental impacts, as well as circular and low-CO<sub>2</sub> products.

**Guide to assessing product sustainability** is a white paper that clarifies global eco-label standards and how to interpret environmental declarations.

[Learn more about Green Premium >](#)

[Guide to assess a product's sustainability >](#)



Transparency   RoHS/REACH

## Well-being performance

✓ Reach Free Of Svhc

✓ Mercury Free

✓ Rohs Exemption Information   [Yes](#)

## Certifications & Standards

Reach Regulation	<a href="#">REACH Declaration</a>
Eu Rohs Directive	Pro-active compliance (Product out of EU RoHS legal scope)
China Rohs Regulation	<a href="#">China RoHS declaration</a>
Environmental Disclosure	<a href="#">Product Environmental Profile</a>
Circularity Profile	<a href="#">End of Life Information</a>