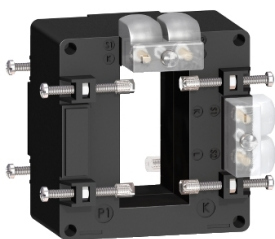


# Product data sheet

Specifications



## current transformer tropicalised 500 5 double output for bars 32x65

METSECT5DA050

### Main

Range	PowerLogic
Product Name	CT
Product Or Component Type	Current transformer
Secondary Current	5 A
Accuracy Class	Class 0.5 at 8 VA Class 1 at 10 VA
[In] Rated Current	500 A

### Complementary

Current Transformer Type	Tropicalised for busbar
Current Transformer Ratio	500/5
[Ith] Conventional Free Air Thermal Current	30 kA
Dynamic Withstand Current	2.5 Ith
Maximum Safety Factor	5
[Ue] Rated Operational Voltage	< 720 V AC 50/60 Hz
[Ui] Rated Insulation Voltage	3 kV
Mounting Mode	Insulated locking screw
Mounting Support	Busbar
Width	Outside: 90 mm Inner: 65 mm
Height	Outside: 94 mm Inner: 32 mm
Depth	40 mm frame: 87 mm total:
Net Weight	0.541 kg
[Uimp] Rated Impulse Withstand Voltage	3 kV
Electrical Insulation Class	Class B
Opening Of Bars	65 x 32
Sealing	With

### Environment

Standards	IEC 61869-2 VDE 0414
Product Certifications	CE

Disclaimer: This documentation is not intended as a substitute for and is not to be used for determining suitability or reliability of these products for specific user applications

Ip Degree Of Protection	IP20
Relative Humidity	0...95 %
Ambient Air Temperature For Operation	-25...60 °C

## Packing Units

Unit Type Of Package 1	PCE
Number Of Units In Package 1	1
Package 1 Height	10.2 cm
Package 1 Width	9.4 cm
Package 1 Length	10.1 cm
Package 1 Weight	502.0 g
Unit Type Of Package 2	S03
Number Of Units In Package 2	16
Package 2 Height	30.0 cm
Package 2 Width	30.0 cm
Package 2 Length	40.0 cm
Package 2 Weight	8.823 kg

## Sustainability

**Green Premium™ label** is Schneider Electric's commitment to delivering products with best-in-class environmental performance. Green Premium promises compliance with the latest regulations, transparency on environmental impacts, as well as circular and low-CO<sub>2</sub> products.

**Guide to assessing product sustainability** is a white paper that clarifies global eco-label standards and how to interpret environmental declarations.

[Learn more about Green Premium >](#)

[Guide to assess a product's sustainability >](#)



RoHS/REACH

## Well-being performance

✓ Mercury Free

✓ Rohs Exemption Information [Yes](#)

## Certifications & Standards

Reach Regulation	<a href="#">REACH Declaration</a>
Eu Rohs Directive	Compliant with Exemptions
China Rohs Regulation	<a href="#">China RoHS declaration</a>
Weee	The product must be disposed on European Union markets following specific waste collection and never end up in rubbish bins