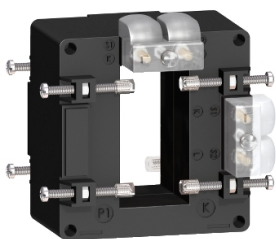


Product data sheet

Specifications



current transformer tropicalised 800 5 double output for bars 32x65

METSECT5DA080

Main

Range	PowerLogic
Product Name	CT
Product Or Component Type	Current transformer
Secondary Current	5 A
Accuracy Class	Class 0.5 at 12 VA Class 1 at 15 VA
[In] Rated Current	800 A

Complementary

Current Transformer Type	Tropicalised for busbar
Current Transformer Ratio	800/5
[Ith] Conventional Free Air Thermal Current	48 kA
Dynamic Withstand Current	2.5 Ith
Maximum Safety Factor	5
[Ue] Rated Operational Voltage	< 720 V AC 50/60 Hz
[Ui] Rated Insulation Voltage	3 kV
Mounting Mode	Insulated locking screw
Mounting Support	Busbar
Width	90 mm outside: 65 mm inner:
Height	94 mm outside: 32 mm inner:
Depth	40 mm frame: 87 mm total:
Net Weight	0.576 kg
[Uimp] Rated Impulse Withstand Voltage	3 kV
Electrical Insulation Class	Class B
Opening Of Bars	65 x 32
Sealing	With

Environment

Standards	IEC 61869-2 VDE 0414
-----------	-------------------------

Disclaimer: This documentation is not intended as a substitute for and is not to be used for determining suitability or reliability of these products for specific user applications

Product Certifications	EAC CE
Ip Degree Of Protection	IP20
Relative Humidity	0...95 %
Ambient Air Temperature For Operation	-25...60 °C

Packing Units

Unit Type Of Package 1	PCE
Number Of Units In Package 1	1
Package 1 Height	10.5 cm
Package 1 Width	9.5 cm
Package 1 Length	10.0 cm
Package 1 Weight	530.0 g
Unit Type Of Package 2	S03
Number Of Units In Package 2	16
Package 2 Height	30.0 cm
Package 2 Width	30.0 cm
Package 2 Length	40.0 cm
Package 2 Weight	8.9 kg

Sustainability

Green Premium™ label is Schneider Electric's commitment to delivering products with best-in-class environmental performance. Green Premium promises compliance with the latest regulations, transparency on environmental impacts, as well as circular and low-CO₂ products.

Guide to assessing product sustainability is a white paper that clarifies global eco-label standards and how to interpret environmental declarations.

[Learn more about Green Premium >](#)

[Guide to assess a product's sustainability >](#)



RoHS/REACH

Well-being performance

✓ Mercury Free

✓ Rohs Exemption Information [Yes](#)

Certifications & Standards

Reach Regulation	REACH Declaration
Eu Rohs Directive	Compliant with Exemptions
China Rohs Regulation	China RoHS declaration
Weee	The product must be disposed on European Union markets following specific waste collection and never end up in rubbish bins