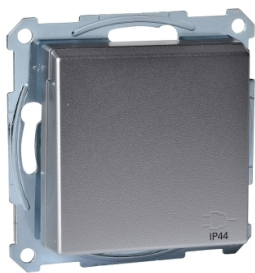


Product data sheet

Specifications



Socket-outlet, Merten System M, 2P + E, 16A, German, screwless terminals, IP44, varnished, aluminium

MTN2314-0460

Main

Aesthetic Name	M-Smart M-Star M-Plan glass System M M-Arc M-Elegance M-Plan
Device Presentation	Mechanism with central plate
Outlet Standard	German
Product Or Component Type	Socket-outlet
Socket Additional Information	With hinged lid

Complementary

Outlet Poles Configuration	2P + E
Wiring Device Mounting	Flush
Fixing Mode	By screws and claws
Colour Tint	Aluminium
Connections - Terminals	Screwless terminals
Surface Treatment	Varnished
Rated Current	16 A
[Ue] Rated Operational Voltage	250 V

Environment

Ip Degree Of Protection	IP44
-------------------------	------

Packing Units

Unit Type Of Package 1	PCE
Number Of Units In Package 1	1
Package 1 Height	5.600 cm
Package 1 Width	7.700 cm
Package 1 Length	7.700 cm
Package 1 Weight	100.000 g
Unit Type Of Package 2	CAR
Number Of Units In Package 2	50
Package 2 Height	19.500 cm

Disclaimer: This documentation is not intended as a substitute for and is not to be used for determining suitability or reliability of these products for specific user applications

Package 2 Width	38.600 cm
Package 2 Length	40.900 cm
Package 2 Weight	5390.000 kg

Contractual warranty

Warranty	18 months
----------	-----------

Sustainability

Green Premium™ label is Schneider Electric's commitment to delivering products with best-in-class environmental performance. Green Premium promises compliance with the latest regulations, transparency on environmental impacts, as well as circular and low-CO₂ products.

Guide to assessing product sustainability is a white paper that clarifies global eco-label standards and how to interpret environmental declarations.

[Learn more about Green Premium >](#)

[Guide to assess a product's sustainability >](#)

Eu Rohs Directive	Under investigation
Weee	The product must be disposed on European Union markets following specific waste collection and never end up in rubbish bins