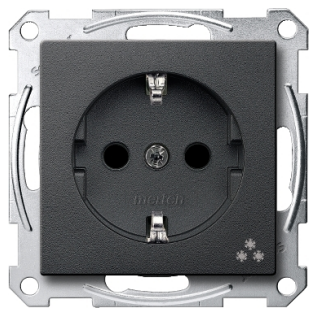


Product data sheet

Specifications



SCHUKO socket - outlet marked Freezer,shut.,screwl.term.,anthracite

MTN2355-0414

⚠ Discontinued on: Nov 8, 2017

⚠ Discontinued

Main

Aesthetic Name	M-Arc M-Plan M-Elegance System M M-Plan glass M-Star M-Smart
Device Presentation	Mechanism with central plate
Outlet Standard	German
Product Or Component Type	Socket-outlet
Socket Additional Information	Shuttered

Complementary

Outlet Poles Configuration	2P + E
Wiring Device Mounting	Flush
Fixing Mode	By screws and claws
Colour Tint	Anthracite (RAL 7024)
Connections - Terminals	Screwless terminals
Rated Current	16 A
[Ue] Rated Operational Voltage	250 V

Environment

Ip Degree Of Protection	IP20
-------------------------	------

Packing Units

Unit Type Of Package 1	PCE
Number Of Units In Package 1	1
Package 1 Height	5.3 cm
Package 1 Width	7.6 cm
Package 1 Length	7.6 cm
Package 1 Weight	0.091 kg

Contractual warranty

Warranty	18 months
----------	-----------

Disclaimer: This documentation is not intended as a substitute for and is not to be used for determining suitability or reliability of these products for specific user applications

