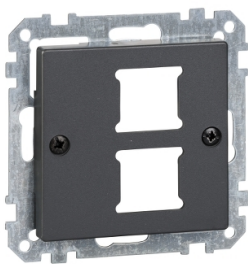


Product data sheet

Specifications



Central plate for RJ 11/RJ 45 insert, 2-gang, anthracite, System M

MTN291214

⚠ Discontinued on: Jun 30, 2023

⚠ Discontinued

Main

Aesthetic Name	M-Elegance M-Arc M-Star M-Smart M-Plan M-Plan glass System M
Product Or Component Type	Central plate
Device Presentation	Central plate

Complementary

Product Destination	Insert
Wiring Device Mounting	Flush
Fixing Mode	By screws
Material	Polycarbonate matt

Packing Units

Unit Type Of Package 1	PCE
Number Of Units In Package 1	1
Package 1 Height	1.7 cm
Package 1 Width	7.3 cm
Package 1 Length	7.3 cm
Package 1 Weight	23 g
Unit Type Of Package 2	BB1
Number Of Units In Package 2	5
Package 2 Height	7.2 cm
Package 2 Width	7 cm
Package 2 Length	8.2 cm
Package 2 Weight	130 g
Unit Type Of Package 3	CAR
Number Of Units In Package 3	150
Package 3 Height	18.5 cm
Package 3 Width	30 cm

Disclaimer: This documentation is not intended as a substitute for and is not to be used for determining suitability or reliability of these products for specific user applications

Package 3 Length	40 cm
Package 3 Weight	4.31 kg

Contractual warranty

Warranty	18 months
----------	-----------

Sustainability

Green Premium™ label is Schneider Electric's commitment to delivering products with best-in-class environmental performance. Green Premium promises compliance with the latest regulations, transparency on environmental impacts, as well as circular and low-CO₂ products.

Guide to assessing product sustainability is a white paper that clarifies global eco-label standards and how to interpret environmental declarations.

[Learn more about Green Premium >](#)

[Guide to assess a product's sustainability >](#)

Eu Rohs Directive	Under investigation
Weee	The product must be disposed on European Union markets following specific waste collection and never end up in rubbish bins