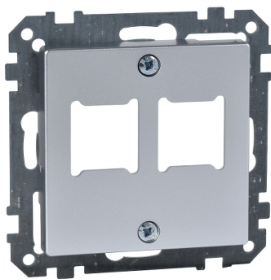


Product data sheet

Specifications



Central plate for RJ 11/RJ 45 insert, 2-gang, aluminium, System M

MTN291260

Main

Aesthetic Name	M-Plan M-Smart System M M-Star M-Plan glass M-Arc M-Elegance
Product Or Component Type	Central plate
Device Presentation	Central plate
Colour	Aluminium

Complementary

Product Destination	Insert
Wiring Device Mounting	Flush
Fixing Mode	By screws
Material	Polycarbonate glossy
Surface Treatment	Varnished

Packing Units

Unit Type Of Package 1	PCE
Number Of Units In Package 1	1
Package 1 Height	2.900 cm
Package 1 Width	9.900 cm
Package 1 Length	7.900 cm
Package 1 Weight	23.000 g
Unit Type Of Package 2	BB1
Number Of Units In Package 2	5
Package 2 Height	7.200 cm
Package 2 Width	7.000 cm
Package 2 Length	8.200 cm
Package 2 Weight	130.000 g
Unit Type Of Package 3	S03
Number Of Units In Package 3	150
Package 3 Height	30.000 cm

Disclaimer: This documentation is not intended as a substitute for and is not to be used for determining suitability or reliability of these products for specific user applications

Package 3 Width	30.000 cm
Package 3 Length	40.000 cm
Package 3 Weight	4.320 kg

Contractual warranty

Warranty	18 months
----------	-----------

Sustainability

Green Premium™ label is Schneider Electric's commitment to delivering products with best-in-class environmental performance. Green Premium promises compliance with the latest regulations, transparency on environmental impacts, as well as circular and low-CO₂ products.

Guide to assessing product sustainability is a white paper that clarifies global eco-label standards and how to interpret environmental declarations.

[Learn more about Green Premium >](#)

[Guide to assess a product's sustainability >](#)

Eu Rohs Directive	Under investigation
Weee	The product must be disposed on European Union markets following specific waste collection and never end up in rubbish bins
Circularity Profile	No need of specific recycling operations