

# Product data sheet

Specifications



## Circuit breaker, EasyPact MVS, 3 Poles, 1000A, 50kA, MF, ET2, fixed, manual

MVS10N3MF2L

### Main

Range	EasyPact
Product Name	MVS10N
Device Short Name	MVS10N
Product Or Component Type	Circuit breaker
Device Application	Distribution
Poles Description	3P
Protected Poles Description	3P 3d
[In] Rated Current	1000 A at 40 °C
Network Type	AC
[Ue] Rated Operational Voltage	690 V AC 50/60 Hz conforming to IEC 60947-2
Breaking Capacity Code	N
Suitability For Isolation	Yes conforming to IEC 60947-2
Utilisation Category	Category B
Trip Unit Name	ET2I
Trip Unit Technology	Electronic
Trip Unit Rating	1000 A

### Complementary

Network Frequency	50/60 Hz
Control Type	Manually operated
Mounting Mode	Fixed
Mounting Support	Rail Base plate
Connection Position	Horizontal Vertical
Location Of Connection	Rear
[Ui] Rated Insulation Voltage	1000 V AC 50/60 Hz conforming to IEC 60947-2
[Uimp] Rated Impulse Withstand Voltage	12 kV conforming to IEC 60947-2
Circuit Breaker Ct Rating	1000 A
Breaking Capacity	50 kA Icu at 220...440 V AC 50/60 Hz conforming to IEC 60947-2
[Ics] Rated Service Breaking Capacity	50 kA (Ics) at 220...440 V AC 50/60 Hz conforming to IEC 60947-2

Disclaimer: This documentation is not intended as a substitute for and is not to be used for determining suitability or reliability of these products for specific user applications

<b>Mechanical Durability</b>	20000 cycles (with maintenance) conforming to IEC 60947-2 10000 cycles (without maintenance) conforming to IEC 60947-2
<b>Electrical Durability</b>	Category B: 6000 cycles 440 V AC 50/60 Hz without maintenance conforming to IEC 60947-2 Category B: 4000 cycles 690 V AC 50/60 Hz without maintenance conforming to IEC 60947-2
<b>Connection Pitch</b>	115 mm without spreader
<b>Contact Position Indicator</b>	Yes
<b>[Icm] Rated Short-Circuit Making Capacity</b>	105 kA (Icm) at 220...440 V AC 50/60 Hz conforming to IEC 60947-2
<b>[Icw] Rated Short-Time Withstand Current</b>	50 kA (1 s) at 220...440 V AC 50/60 Hz conforming to IEC 60947-2 42 kA (1 s) at 690 V AC 50/60 Hz conforming to IEC 60947-2 25 kA (3 s) at 440/690 V AC 50/60 Hz conforming to IEC 60947-2
<b>Trip Unit Protection Functions</b>	LI
<b>Protection Type</b>	Instantaneous short-circuit protection Overload protection (long time)
<b>Fault Indication</b>	Overload Internal fault Short-circuit
<b>Long Time Pick-Up Adjustment Type Ir</b>	Adjustable 9 settings
<b>Long Time Pick-Up Adjustment Range</b>	0.4...1 x In
<b>Long Time Delay Adjustment Type</b>	Adjustable 9 settings
<b>[Tr] Long-Time Delay Adjustment Range</b>	0.5...24 s at 6 x Ir
<b>Thermal Memory</b>	20 minutes before and after tripping
<b>Instantaneous Pick-Up Adjustment Type Ii</b>	Adjustable 9 settings
<b>Instantaneous Pick-Up Adjustment Range</b>	1.5...10 x Ir
<b>Zone Selective Interlocking Zsi</b>	With
<b>Current Sensor Rating Range</b>	400/2000 A
<b>Maximum Breaking Time</b>	25 ms
<b>Maximum Closing Response Time</b>	70 ms
<b>Height</b>	352 mm
<b>Width</b>	422 mm
<b>Depth</b>	297 mm
<b>Net Weight</b>	40 kg

## Environment

<b>Standards</b>	IEC 60947-2
<b>Product Certifications</b>	CCS IEC GOST CCC
<b>Pollution Degree</b>	4 conforming to IEC 60664-1
<b>Ip Degree Of Protection</b>	IP40
<b>Ambient Air Temperature For Operation</b>	-5...70 °C
<b>Ambient Air Temperature For Storage</b>	-40...85 °C without control unit -25...85 °C with control unit

## Packing Units

Unit Type Of Package 1	PCE
Number Of Units In Package 1	1
Package 1 Height	42.0 cm
Package 1 Width	35.0 cm
Package 1 Length	50.0 cm
Package 1 Weight	38.0 kg

## Contractual warranty

Warranty	18 months
----------	-----------

## Sustainability

**Green Premium™** label is Schneider Electric's commitment to delivering products with best-in-class environmental performance. Green Premium promises compliance with the latest regulations, transparency on environmental impacts, as well as circular and low-CO<sub>2</sub> products.

**Guide to assessing product sustainability** is a white paper that clarifies global eco-label standards and how to interpret environmental declarations.

[Learn more about Green Premium >](#)

[Guide to assess a product's sustainability >](#)



Transparency   RoHS/REACH

## Well-being performance

✓ Mercury Free

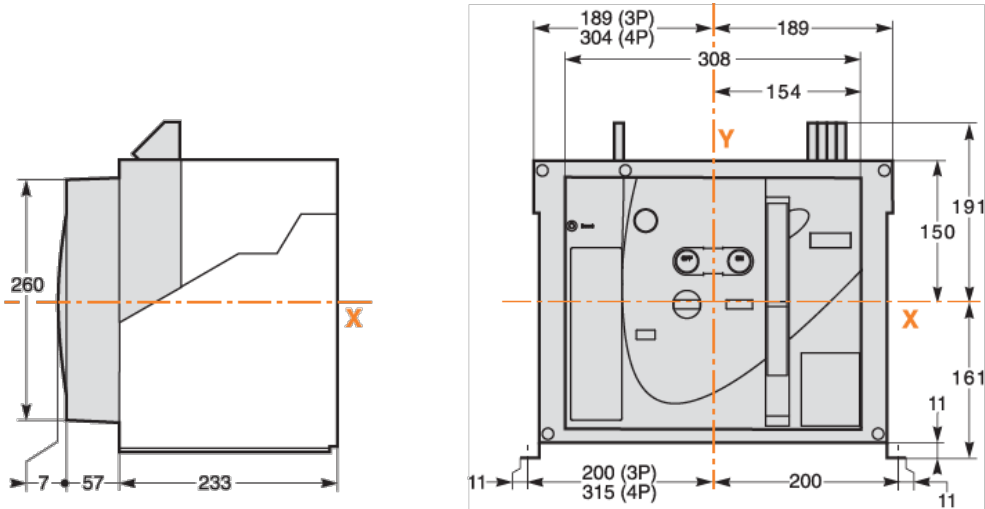
✓ Rohs Exemption Information   [Yes](#)

✓ Pvc Free

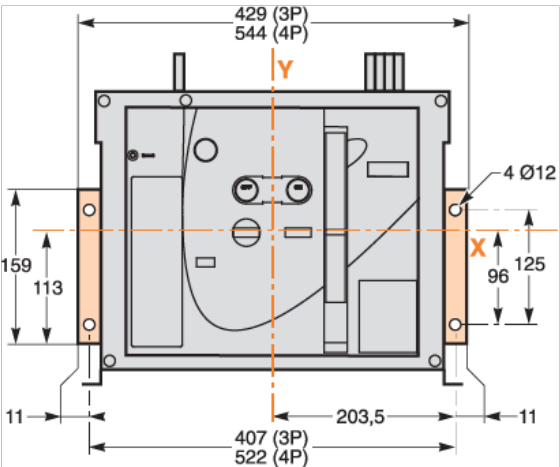
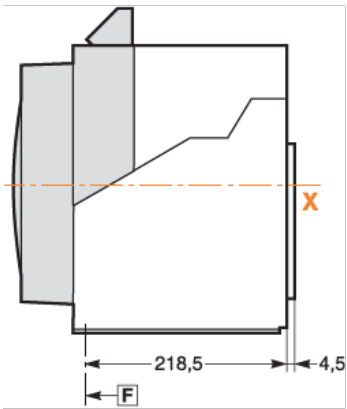
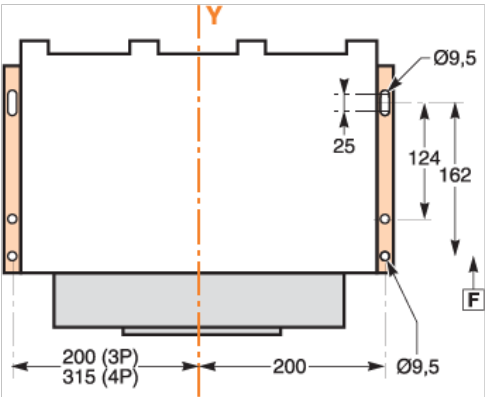
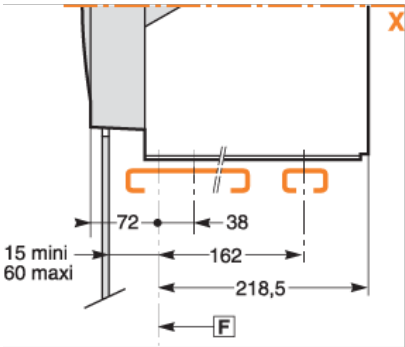
## Certifications & Standards

Reach Regulation	<a href="#">REACH Declaration</a>
Eu Rohs Directive	Compliant with Exemptions
China Rohs Regulation	<a href="#">China RoHS declaration</a> Product out of China RoHS scope. Substance declaration for your information
Environmental Disclosure	<a href="#">Product Environmental Profile</a>
Circularity Profile	<a href="#">End of Life Information</a>

Dimensions Drawings



Assembly



Performance Curves

