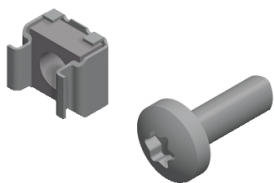


Product data sheet

Specifications



Spacial - plinth fixing kit stainless steel 304L

NSYAPFXWM

Main

Range	Spacial
Application	Outdoor heavy duty
Accessory / Separate Part Category	Fixing accessory
Product Or Component Type	Fixing kit
Application	Multi-purpose
For Enclosure Nominal Dimensions	-
Mounting Support	Plinth kit
Range Compatibility	Spacial Spacial S3HD
Device Composition	2 fixing elements

Complementary

Material	Stainless steel 304L
Fixing Mode	By fixing element - on corners of plinth location
Net Weight	0.75 kg

Packing Units

Unit Type Of Package 1	PCE
Number Of Units In Package 1	1
Package 1 Height	1.5 cm
Package 1 Width	8.0 cm
Package 1 Length	35.0 cm
Package 1 Weight	750.0 g

Disclaimer: This documentation is not intended as a substitute for and is not to be used for determining suitability or reliability of these products for specific user applications

Sustainability

Green Premium™ label is Schneider Electric's commitment to delivering products with best-in-class environmental performance. Green Premium promises compliance with the latest regulations, transparency on environmental impacts, as well as circular and low-CO₂ products.

Guide to assessing product sustainability is a white paper that clarifies global eco-label standards and how to interpret environmental declarations.

[Learn more about Green Premium >](#)

[Guide to assess a product's sustainability >](#)



Transparency RoHS/REACH

Well-being performance

✓	Reach Free Of Svhc	
✓	Toxic Heavy Metal Free	
✓	Mercury Free	
✓	Rohs Exemption Information	Yes

Certifications & Standards

Reach Regulation	REACH Declaration
Eu Rohs Directive	Pro-active compliance (Product out of EU RoHS legal scope) EU RoHS Declaration
China Rohs Regulation	China RoHS declaration Pro-active China RoHS declaration (out of China RoHS legal scope)
Environmental Disclosure	Product Environmental Profile
Circularity Profile	No need of specific recycling operations