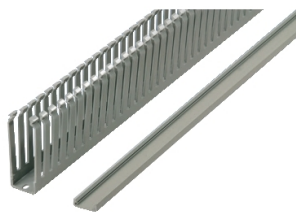


Product data sheet

Specifications



Cable ducting with cover, RAL 7030,
H50xW25mm, length 2m. Packaging
unit: 48

NSYCD2M2550

⚠ Discontinued

Main

Accessory / Separate Part Category	Cable management accessory
Product Or Component Type	Cable duct
Range Compatibility	Thalassa Thalassa PLS Thalassa Thalassa PLA Thalassa Thalassa PLM Spacial Spacial SBM Spacial Spacial S3D Spacial Spacial S3CM Spacial Spacial CRN
Anwendung	Multi-purpose
Device Composition	1 cable duct 1 cover
Quantity Per Set	Set of 24

Complementary

Material	PVC (polyvinyl chloride)
Colour	Grey (RAL 7030)
Length	2000 mm
Height	50 mm
Width	25 mm

Environment

Environmental Characteristic	Slotted trunking; Requirements and tests conforming to VDE 0660-506 Slotted trunkings for switchgear assemblies conforming to DIN 43659
Fire Resistance	960 °C conforming to IEC 60695-2-1/1 960 °C conforming to UL94 (material V0)
Ambient Air Temperature For Operation	-5...60 °C

Contractual warranty

Warranty	18 months
----------	-----------

Disclaimer: This documentation is not intended as a substitute for and is not to be used for determining suitability or reliability of these products for specific user applications

Sustainability

Green Premium™ label is Schneider Electric’s commitment to delivering products with best-in-class environmental performance. Green Premium promises compliance with the latest regulations, transparency on environmental impacts, as well as circular and low-CO₂ products.

Guide to assessing product sustainability is a white paper that clarifies global eco-label standards and how to interpret environmental declarations.

[Learn more about Green Premium >](#)

[Guide to assess a product’s sustainability >](#)



Transparency

Eu Rohs Directive

Pro-active compliance (Product out of EU RoHS legal scope)

[EU RoHS Declaration](#)

Environmental Disclosure

[Product Environmental Profile](#)