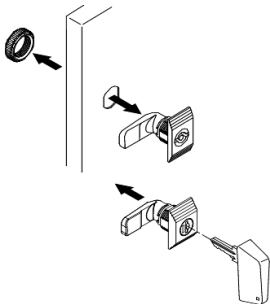


# Product data sheet

Specifications



## Complete manual handle lock operated with key 220 (2) for Spacial CRN enclosure

NSYCL220CRN

### Main

|                                    |                                      |
|------------------------------------|--------------------------------------|
| Range                              | Spacial                              |
| Accessory / Separate Part Category | Locking accessory                    |
| Product Or Component Type          | Lock                                 |
| Application                        | Multi-purpose                        |
| Mounting Support                   | Direct mounting on standard lock     |
| Product Compatibility              | CRN enclosure                        |
| Range Compatibility                | Spacial Spacial CRN                  |
| Device Composition                 | 2 key<br>1 key lock<br>1 plastic cam |

### Complementary

|                  |  |
|------------------|--|
| Quantity Per Set | Set of 1                                   |
| Material         | Lock: zamak + steel<br>Cam: PA (polyamide) |
| Lock Type        | Key lock                                   |
| Type Of Keylock  | Cylindrical                                |
| Key Number       | 220  |

### Packing Units

|                              |          |
|------------------------------|----------|
| Unit Type Of Package 1       | PCE      |
| Number Of Units In Package 1 | 1        |
| Package 1 Height             | 3.500 cm |
| Package 1 Width              | 4.500 cm |
| Package 1 Length             | 9.000 cm |
| Package 1 Weight             | 62.000 g |
| Unit Type Of Package 2       | S02      |
| Number Of Units In Package 2 | 40       |
| Package 2 Height             | 15 cm    |
| Package 2 Width              | 30 cm    |
| Package 2 Length             | 40 cm    |
| Package 2 Weight             | 2.721 kg |
| Unit Type Of Package 3       | P12      |

Disclaimer: This documentation is not intended as a substitute for and is not to be used for determining suitability or reliability of these products for specific user applications

|                              |            |
|------------------------------|------------|
| Number Of Units In Package 3 | 640        |
| Package 3 Height             | 45.000 cm  |
| Package 3 Width              | 80.000 cm  |
| Package 3 Length             | 120.000 cm |
| Package 3 Weight             | 55.536 kg  |

## Contractual warranty

|          |           |
|----------|-----------|
| Warranty | 18 months |
|----------|-----------|

## Sustainability

**Green Premium™ label** is Schneider Electric's commitment to delivering products with best-in-class environmental performance. Green Premium promises compliance with the latest regulations, transparency on environmental impacts, as well as circular and low-CO<sub>2</sub> products.

**Guide to assessing product sustainability** is a white paper that clarifies global eco-label standards and how to interpret environmental declarations.

[Learn more about Green Premium >](#)

[Guide to assess a product's sustainability >](#)



Transparency   RoHS/REACH

## Well-being performance



Mercury Free



RoHS Exemption Information

Yes

## Certifications & Standards

Reach Regulation

[REACH Declaration](#)

Eu RoHS Directive

Pro-active compliance (Product out of EU RoHS legal scope)

China RoHS Regulation

[China RoHS declaration](#)

Product out of China RoHS scope. Substance declaration for your information

Environmental Disclosure

[Product Environmental Profile](#)

Circularity Profile

No need of specific recycling operations