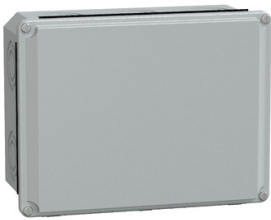


Product data sheet

Specifications



Metal industrial cut-out box - low plain cover - H206xW156xD83 - IP55 - grey

NSYDB2015M

Main

| | |
|---------------------------|-----------------------|
| Range Of Product | Spacial SDB |
| Device Application | Multi-purpose |
| Product Or Component Type | Junction box |
| Enclosure Type | Empty enclosure |
| Type Of Front Cover | Low plain cover |
| Colour | Light grey (RAL 7035) |

Complementary

| | |
|--------------------------|--|
| Enclosure Nominal Height | 206 mm |
| Enclosure Nominal Width | 156 mm |
| Enclosure Nominal Depth | 83 mm |
| Enclosure Mounting | Wall mounted |
| Device Composition | 1 body 1 cover 1 cover screw |
| Cable Entry Number | 5 diameter: 20.5 mm (M20) 5 diameter: 25.5 mm (M25) 5 diameter: 32.5 mm (M32) 5 diameter: 40.5 mm (M40) |
| Cover Fixing | Screw |
| Material | Steel |
| Surface Finish | Epoxy-polyester powder |
| Net Weight | 1.023 kg |

Environment

| | |
|-------------------------|------------------------------|
| Standards | IEC 62208 |
| Ip Degree Of Protection | IP55 conforming to IEC 60529 |
| Ik Degree Of Protection | IK07 conforming to IEC 62262 |

Packing Units

| | |
|------------------------------|-----------|
| Unit Type Of Package 1 | PCE |
| Number Of Units In Package 1 | 1 |
| Package 1 Height | 8.500 cm |
| Package 1 Width | 15.500 cm |

Disclaimer: This documentation is not intended as a substitute for and is not to be used for determining suitability or reliability of these products for specific user applications

| | |
|------------------------------|-----------|
| Package 1 Length | 21.500 cm |
| Package 1 Weight | 915.000 g |
| Unit Type Of Package 2 | BB1 |
| Number Of Units In Package 2 | 5 |
| Package 2 Height | 18.000 cm |
| Package 2 Width | 23.000 cm |
| Package 2 Length | 44.500 cm |
| Package 2 Weight | 5.077 kg |
| Unit Type Of Package 3 | S04 |
| Number Of Units In Package 3 | 10 |
| Package 3 Height | 30 cm |
| Package 3 Width | 40 cm |
| Package 3 Length | 60 cm |
| Package 3 Weight | 10.804 kg |

Sustainability

Green Premium™ label is Schneider Electric’s commitment to delivering products with best-in-class environmental performance. Green Premium promises compliance with the latest regulations, transparency on environmental impacts, as well as circular and low-CO₂ products.

Guide to assessing product sustainability is a white paper that clarifies global eco-label standards and how to interpret environmental declarations.

[Learn more about Green Premium >](#)

[Guide to assess a product’s sustainability >](#)



Transparency RoHS/REACH

Well-being performance

| | | |
|---|----------------------------|-----|
| ✓ | Reach Free Of Svhc | |
| ✓ | Toxic Heavy Metal Free | |
| ✓ | Mercury Free | |
| ✓ | Rohs Exemption Information | Yes |

Certifications & Standards

| | |
|--------------------------|---|
| Reach Regulation | REACH Declaration |
| Eu Rohs Directive | Pro-active compliance (Product out of EU RoHS legal scope) EU RoHS Declaration |
| China Rohs Regulation | China RoHS declaration Pro-active China RoHS declaration (out of China RoHS legal scope) |
| Environmental Disclosure | Product Environmental Profile |
| Circularity Profile | No need of specific recycling operations |