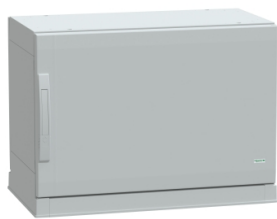


# Product data sheet

Specifications



Floor standing polyester enclosure,  
Thalassa PLA, plain door, open  
bottom, 500x750x420mm, IP54,  
IK10

NSYPLAZ574G

## Main

Range	Thalassa
Product Name	Thalassa PLA
Enclosure Type	Multi-purpose
Product Or Component Type	Suitable enclosure
Version	PLAZ
Nominal Height	500 mm
Nominal Width	750 mm
Nominal Depth	420 mm
Enclosure Mounting	Floor-standing
Device Composition	1 top part 1 bottom part 2 side part 1 rear panel 1 door 1 plinth

## Complementary

Body Type	Sealed top and open bottom part assembled with side parts
Door Type	Plain front
Number Of Doors	1 door(s)
Door Opening Side	Reversible (120 °)
Lock Type	2 points handle lock, 5 mm double-bar
Accessibility For Operation	Rear Bottom Front
Removable Parts	Door by hinges Rear panel by fixing element
Material	Polyester reinforced with fibreglass
Colour	Grey (RAL 7035)
Standards	IEC 62208
Product Certifications	Veritas
Electrical Insulation Class	Class II

## Environment

Ip Degree Of Protection	IP54 conforming to IEC 60529 (plinth type open bottom)
-------------------------	--

Disclaimer: This documentation is not intended as a substitute for and is not to be used for determining suitability or reliability of these products for specific user applications

<b>Ik Degree Of Protection</b>	IK10 conforming to IEC 62262 (plain door)
<b>Fire Resistance</b>	960 °C conforming to IEC 62208
<b>Ambient Air Temperature For Storage</b>	-35...90 °C

## Packing Units

<b>Unit Type Of Package 1</b>	PCE
<b>Number Of Units In Package 1</b>	1
<b>Package 1 Height</b>	56.5 cm
<b>Package 1 Width</b>	78 cm
<b>Package 1 Length</b>	45 cm
<b>Package 1 Weight</b>	25.82 kg
<b>Unit Type Of Package 2</b>	PAM
<b>Number Of Units In Package 2</b>	6
<b>Package 2 Height</b>	120 cm
<b>Package 2 Width</b>	100 cm
<b>Package 2 Length</b>	129 cm
<b>Package 2 Weight</b>	143 kg

## Sustainability

**Green Premium™ label** is Schneider Electric's commitment to delivering products with best-in-class environmental performance. Green Premium promises compliance with the latest regulations, transparency on environmental impacts, as well as circular and low-CO<sub>2</sub> products.

**Guide to assessing product sustainability** is a white paper that clarifies global eco-label standards and how to interpret environmental declarations.

[Learn more about Green Premium >](#)

[Guide to assess a product's sustainability >](#)



Transparency   RoHS/REACH

## Well-being performance

✓ Mercury Free

✓ Rohs Exemption Information   [Yes](#)

## Certifications & Standards

Reach Regulation	<a href="#">REACH Declaration</a>
Eu Rohs Directive	Pro-active compliance (Product out of EU RoHS legal scope)
China Rohs Regulation	<a href="#">China RoHS declaration</a> Product out of China RoHS scope. Substance declaration for your information
Environmental Disclosure	<a href="#">Product Environmental Profile</a>
Circularity Profile	No need of specific recycling operations