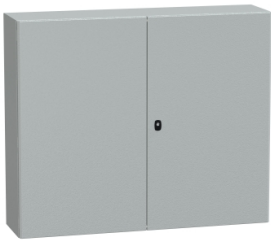


Product data sheet

Specifications



Wall mounted steel enclosure,
Spacial S3D, double plain door,
without mounting plate,
1000x1200x300mm, IP55, IK10

NSYS3D101230D

Main

Range	Spacial
Product Name	Spacial S3D
Application	Multi-purpose
Category	Compact enclosure
Enclosure Nominal Height	1000 mm
Enclosure Nominal Width	1200 mm
Enclosure Nominal Depth	300 mm
Door Type	Plain
Mounting Plate Description	Without mounting plate
Type Of Gland Plate	Standard
Installation Accessory Type	Wall-mounting
Device Composition	1 body 2 cable gland plate 1 lock 2 door

Complementary

Body Type	Single piece body Gutter-shaped front rail double sheet thickness
Number Of Doors	Front face: 2 door(s)
Door Opening Side	Reversible (120 °)
Lock Type	3 points lock, 3 mm double-bar
Accessibility For Operation	Front
Removable Parts	Door by hinges Cable gland plate by screws
Material	Steel
Surface Finish	Epoxy-polyester powder
Colour	Grey (RAL 7035)
Standards	IEC 62208
Product Certifications	LR cUL DNV BV GL UL
Net Weight	53 kg

Disclaimer: This documentation is not intended as a substitute for and is not to be used for determining suitability or reliability of these products for specific user applications

Environment

Electromagnetic Compatibility	Electromagnetic field immunity test
Ik Degree Of Protection	IK10 conforming to IEC 62262
Ip Degree Of Protection	IP55 conforming to IEC 60529

Packing Units

Unit Type Of Package 1	PCE
Number Of Units In Package 1	1
Package 1 Height	102.4 cm
Package 1 Width	122.6 cm
Package 1 Length	35.4 cm
Package 1 Weight	53.0 kg
Unit Type Of Package 2	P12
Number Of Units In Package 2	2
Package 2 Height	120 cm
Package 2 Width	80 cm
Package 2 Length	115 cm
Package 2 Weight	117 kg

Contractual warranty

Warranty	18 months
----------	-----------

Sustainability

Green Premium™ label is Schneider Electric's commitment to delivering products with best-in-class environmental performance. Green Premium promises compliance with the latest regulations, transparency on environmental impacts, as well as circular and low-CO₂ products.

Guide to assessing product sustainability is a white paper that clarifies global eco-label standards and how to interpret environmental declarations.

[Learn more about Green Premium >](#)

[Guide to assess a product's sustainability >](#)



Transparency RoHS/REACH

Well-being performance

✓ Mercury Free

✓ Rohs Exemption Information [Yes](#)

Certifications & Standards

Reach Regulation	REACH Declaration
Eu Rohs Directive	Pro-active compliance (Product out of EU RoHS legal scope)
China Rohs Regulation	China RoHS declaration Product out of China RoHS scope. Substance declaration for your information
Environmental Disclosure	Product Environmental Profile
Circularity Profile	No need of specific recycling operations