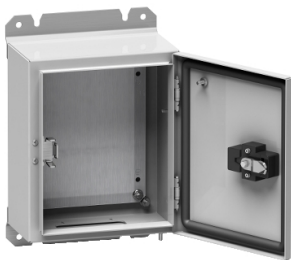


# Product data sheet

Specifications



## Spacial S3D seismic plain door with mount.plate - H1200xW800xD400 - IP65 - IK10

NSYS3D6G12840P

### Main

|                            |  |
|----------------------------|--|
| Range                      | Spacial  |
| Product Name               | S3D 6G   |
| Enclosure Application      | Seismic  |
| Product Or Component Type  | Enclosure  |
| Enclosure Nominal Height   | 1200 mm  |
| Enclosure Nominal Width    | 800 mm   |
| Enclosure Nominal Depth    | 400 mm   |
| Door Type                  | Plain  |
| Mounting Plate Description | Reinforce  |
| Enclosure Mounting         | Wall mounted   |
| Device Composition         | 1 x body<br>1 x door<br>1 x lock<br>2 x fixing bracket<br>2 x cable gland plate<br>1 x mounting plate<br>1 x earthing components door and lock |
| Continuity Of Earth        | Earthing connection between body and door  |

### Complementary

|                             |   |
|-----------------------------|---|
| Body Type                   | Gutter-shaped front rail<br>Single piece body         |
| Number Of Doors             | Front face: 1 door(s)                                 |
| Door Opening Side           | Right (120 °)   |
| Lock Type                   | 3-point closure                                       |
| Type Of Keylock             | EDF 1600  |
| Type Of Operating Handle    | Swing handle  |
| Accessibility For Operation | Front   |
| Removable Parts             | Cable gland plate by screws                           |
| Material                    | Steel   |
| Thickness                   | Body: 2 mm<br>Door: 2 mm<br>Cable gland plate: 1.5 mm |
| Surface Finish              | Epoxy-polyester powder                                |
| Colour                      | Grey (RAL 7035)                                       |
| Net Weight                  | 89 kg   |

Disclaimer: This documentation is not intended as a substitute for and is not to be used for determining suitability or reliability of these products for specific user applications

## Environment

|                         |   |
|-------------------------|---|
| Surface Treatment       | 87 % decontaminable painting conforming to NF T 30-501. |
| Standards               | IEC 62208<br>EDF CRT 91 C 112 00                        |
| Ip Degree Of Protection | IP65 conforming to IEC 60529                            |
| Ik Degree Of Protection | IK10 conforming to IEC 62262                            |
| Seismic Performance     | Seismic tests 6G conforming to EDF CRT 91 C 112 00      |

## Packing Units

|                              |          |
|------------------------------|----------|
| Unit Type Of Package 1       | PCE      |
| Number Of Units In Package 1 | 1        |
| Package 1 Height             | 89.0 cm  |
| Package 1 Width              | 46.0 cm  |
| Package 1 Length             | 123.0 cm |
| Package 1 Weight             | 89.0 kg  |

## Sustainability

**Green Premium™ label** is Schneider Electric's commitment to delivering products with best-in-class environmental performance. Green Premium promises compliance with the latest regulations, transparency on environmental impacts, as well as circular and low-CO<sub>2</sub> products.

**Guide to assessing product sustainability** is a white paper that clarifies global eco-label standards and how to interpret environmental declarations.

[Learn more about Green Premium >](#)

[Guide to assess a product's sustainability >](#)

## Well-being performance

|  |   |
|--|---|
|  Mercury Free               |   |
|  Rohs Exemption Information | <a href="#">Yes</a>   |
| Reach Regulation   | <a href="#">REACH Declaration</a>   |
| Eu Rohs Directive  | Pro-active compliance (Product out of EU RoHS legal scope)  |
| China Rohs Regulation  | <a href="#">China RoHS declaration</a><br>Product out of China RoHS scope. Substance declaration for your information |