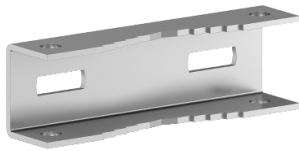


# Product data sheet

Specifications



Post fixing device WM Spacial,  
length 200. For post max 675. Max.  
Load:100kg.

NSYSFPSC20

⚠ Discontinued on: Sep 30, 2023

⚠ Discontinued

## Main

Range	Spacial
Accessory / Separate Part Category	Fixing accessory
Product Or Component Type	Post fixing device
Device Application	Multi-purpose
Enclosure Nominal Dimensions	-
Mounting Location	Rear of enclosure
Range Compatibility	Spacial Spacial SBM
Device Composition	fixing elements 2 support rail 2 strip
Quantity Per Set	Set of 1

## Complementary

Material	Galvanised steel
Fixing Mode	By fixing element - screw type M8 - to the inserts in the rear of the enclosure location Minimum diameter 150 mm Maximum diameter 215 mm
Permanent Permissible Load	100 kg
Height	45 mm
Width	195 mm
Depth	32.5 mm
Net Weight	1.048 kg

## Packing Units

Unit Type Of Package 1	PCE
Number Of Units In Package 1	1
Package 1 Height	25.0 cm
Package 1 Width	18.0 cm
Package 1 Length	6.5 cm
Package 1 Weight	1.048 kg

Disclaimer: This documentation is not intended as a substitute for and is not to be used for determining suitability or reliability of these products for specific user applications

## Sustainability

**Green Premium™ label** is Schneider Electric's commitment to delivering products with best-in-class environmental performance. Green Premium promises compliance with the latest regulations, transparency on environmental impacts, as well as circular and low-CO<sub>2</sub> products.

**Guide to assessing product sustainability** is a white paper that clarifies global eco-label standards and how to interpret environmental declarations.

[Learn more about Green Premium >](#)

[Guide to assess a product's sustainability >](#)

## Well-being performance

✓	Reach Free Of Svhc	
✓	Toxic Heavy Metal Free	
✓	Mercury Free	
✓	Rohs Exemption Information	Yes
Reach Regulation		<a href="#">REACH Declaration</a>
Eu Rohs Directive		Pro-active compliance (Product out of EU RoHS legal scope) <a href="#">EU RoHS Declaration</a>
China Rohs Regulation		<a href="#">China RoHS declaration</a> Pro-active China RoHS declaration (out of China RoHS legal scope)