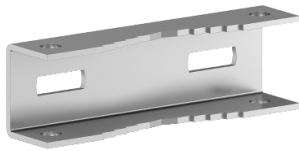


Product data sheet

Specifications



Post fixing device WM Spacial,
length 600. For post max 675. Max.
Load:100kg.

NSYSFPSC60

Overview

Lead Time	Usually Ships within 4 Weeks
-----------	------------------------------

Main

Range	Spacial
Accessory / Separate Part Category	Fixing accessory
Product Or Component Type	Post fixing device
Device Application	Multi-purpose
Enclosure Nominal Dimensions	-
Mounting Location	Rear of enclosure
Range Compatibility	Spacial Spacial S3D Spacial Spacial SBM Spacial Spacial CRN
Device Composition	fixing elements 2 support rail 2 strip
Quantity Per Set	Set of 1

Complementary

Material	Galvanised steel
Fixing Mode	By fixing element - screw type M8 - to the inserts in the rear of the enclosure location Minimum diameter 150 mm Maximum diameter 215 mm
Permanent Permissible Load	100 kg
Height	45 mm
Width	595 mm
Depth	32.5 mm
Net Weight	3.2 kg

Packing Units

Unit Type Of Package 1	PCE
Number Of Units In Package 1	1
Package 1 Height	59.6 cm
Package 1 Width	14.0 cm
Package 1 Length	4.0 cm
Package 1 Weight	3.2 kg

Disclaimer: This documentation is not intended as a substitute for and is not to be used for determining suitability or reliability of these products for specific user applications

Contractual warranty

Warranty	18 months
----------	-----------

Sustainability

Green Premium™ label is Schneider Electric's commitment to delivering products with best-in-class environmental performance. Green Premium promises compliance with the latest regulations, transparency on environmental impacts, as well as circular and low-CO₂ products.

Guide to assessing product sustainability is a white paper that clarifies global eco-label standards and how to interpret environmental declarations.

[Learn more about Green Premium >](#)

[Guide to assess a product's sustainability >](#)



Transparency RoHS/REACH

Well-being performance

✓ Reach Free Of Svhc

✓ Toxic Heavy Metal Free

✓ Mercury Free

✓ Rohs Exemption Information Yes

Certifications & Standards

Reach Regulation	REACH Declaration
Eu Rohs Directive	Pro-active compliance (Product out of EU RoHS legal scope) EU RoHS Declaration
China Rohs Regulation	China RoHS declaration Pro-active China RoHS declaration (out of China RoHS legal scope)
Environmental Disclosure	Product Environmental Profile
Circularity Profile	No need of specific recycling operations