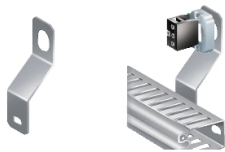


# Product data sheet

Specifications



## Cable ducting support to be used with 22mm-diameter products

NSYSPCP

### Main

Accessory / Separate Part Category	Cable management accessory
Product Or Component Type	Support
Product Destination	Cable duct
Range Compatibility	Thalassa Thalassa PLA Thalassa Thalassa PLS Thalassa Thalassa PLM Spacial Spacial SBM Spacial Spacial S3D Spacial Spacial S3CM Spacial Spacial CRN
Anwendung	Multi-purpose
Mounting Support	Door
Device Composition	1 support
Quantity Per Set	Set of 10

### Complementary

Material	Galvanised steel
Fixing Mode	By screws on 22 mm equipment
Height	100 mm
Width	30 mm
Depth	11.5 mm
Diameter	22.5 mm 0 mm

### Packing Units

Unit Type Of Package 1	PCE
Number Of Units In Package 1	1
Package 1 Height	3.0 cm
Package 1 Width	3.5 cm
Package 1 Length	11.0 cm
Package 1 Weight	30.0 g
Unit Type Of Package 2	BAG
Number Of Units In Package 2	10
Package 2 Height	3.0 cm
Package 2 Width	4.0 cm

Disclaimer: This documentation is not intended as a substitute for and is not to be used for determining suitability or reliability of these products for specific user applications

Package 2 Length	11.0 cm
Package 2 Weight	301.0 g
Unit Type Of Package 3	S01
Number Of Units In Package 3	160
Package 3 Height	15.0 cm
Package 3 Width	15.0 cm
Package 3 Length	40.0 cm
Package 3 Weight	4.933 kg

## Contractual warranty

Warranty	18 months
----------	-----------

## Sustainability

**Green Premium™ label** is Schneider Electric's commitment to delivering products with best-in-class environmental performance. Green Premium promises compliance with the latest regulations, transparency on environmental impacts, as well as circular and low-CO<sub>2</sub> products.

**Guide to assessing product sustainability** is a white paper that clarifies global eco-label standards and how to interpret environmental declarations.

[Learn more about Green Premium >](#)

[Guide to assess a product's sustainability >](#)



Transparency   RoHS/REACH

## Well-being performance

✓ Reach Free Of Svhc

✓ Toxic Heavy Metal Free

✓ Mercury Free

✓ Rohs Exemption Information   [Yes](#)

## Certifications & Standards

Reach Regulation	<a href="#">REACH Declaration</a>
Eu Rohs Directive	Pro-active compliance (Product out of EU RoHS legal scope) <a href="#">EU RoHS Declaration</a>
China Rohs Regulation	<a href="#">China RoHS declaration</a> Pro-active China RoHS declaration (out of China RoHS legal scope)
Environmental Disclosure	<a href="#">Product Environmental Profile</a>
Circularity Profile	No need of specific recycling operations