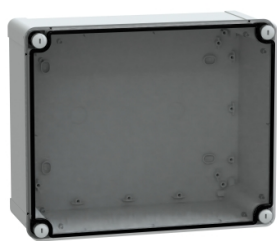


Product data sheet

Specifications



ABS box IP66 IK07 RAL7035
Int.H275W225D120
Ext.H291W241D128 Transp.cover
H20

NSYTBS292412T

Main

Range	Thalassa
Product Name	Thalassa TBS
Device Application	Multi-purpose
Category	Industrial box
Height	291 mm
Width	241 mm
Depth	128 mm
Internal Height	275 mm
Internal Width	225 mm
Internal Depth	120 mm
Enclosure Mounting	Wall mounted
Device Composition	1 body 1 cover 4 cover screw
Body Type	One piece moulded
Type Of Front Cover	Low transparent cover
Cover Fixing	Plastic screws
Lock Type	Captive screw flat outside sealed area
Removable Parts	Cover by captive screws

Complementary

Material	ABS (acrylonitrile butadiene-styrene)
Colour	Grey (RAL 7035) Transparent
Standards	IEC 62208
Product Certifications	TÜV
Electrical Insulation Class	Class II
Ip Degree Of Protection	IP66 conforming to NEMA 4.4X
Ik Degree Of Protection	IK07 conforming to IEC 62262
Glow Wire Resistance	650 °C conforming to IEC 60695-2-11
Ambient Air Temperature For Storage	-15...40 °C
Operating Temperature	-25...60 °C

Disclaimer: This documentation is not intended as a substitute for and is not to be used for determining suitability or reliability of these products for specific user applications

Net Weight	1.08 kg
------------	---------

Packing Units

Unit Type Of Package 1	PCE
Number Of Units In Package 1	1
Package 1 Height	12.8 cm
Package 1 Width	25 cm
Package 1 Length	31 cm
Package 1 Weight	1.064 kg
Unit Type Of Package 2	CAR
Number Of Units In Package 2	6
Package 2 Height	60 cm
Package 2 Width	40 cm
Package 2 Length	40 cm
Package 2 Weight	7.162 kg
Unit Type Of Package 3	P12
Number Of Units In Package 3	72
Package 3 Height	120 cm
Package 3 Width	80 cm
Package 3 Length	135 cm
Package 3 Weight	96 kg

Contractual warranty

Warranty	18 months
----------	-----------

Sustainability

Green Premium™ label is Schneider Electric's commitment to delivering products with best-in-class environmental performance. Green Premium promises compliance with the latest regulations, transparency on environmental impacts, as well as circular and low-CO₂ products.

Guide to assessing product sustainability is a white paper that clarifies global eco-label standards and how to interpret environmental declarations.

[Learn more about Green Premium >](#)

[Guide to assess a product's sustainability >](#)



Transparency RoHS/REACH

Well-being performance

✓ Reach Free Of Svhc

✓ Toxic Heavy Metal Free

✓ Mercury Free

✓ Rohs Exemption Information Yes

Certifications & Standards

Reach Regulation	REACH Declaration
Eu Rohs Directive	Pro-active compliance (Product out of EU RoHS legal scope) EU RoHS Declaration
China Rohs Regulation	China RoHS declaration Pro-active China RoHS declaration (out of China RoHS legal scope)
Environmental Disclosure	Product Environmental Profile
Circularity Profile	No need of specific recycling operations