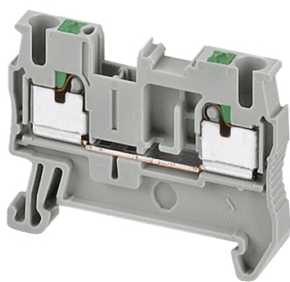


Product data sheet

Specifications



Terminal block, Linergy TR, push-in type, feed through, 2 points, 2.5mm², orange, set of 50

NSYTRP22AR

Main

Range	Linergy
Product Name	Linergy TR
Product Or Component Type	Terminal block
Device Short Name	TRP
Accessory / Separate Part Category	Connection accessory
Terminal Block Type	Passthrough
Terminal Block Level	1
Mounting Mode	Clip-on
Nominal Cross Section	2.5 mm ²
Length	48.5 mm
Colour	Orange
Quantity Per Set	Set of 50

Complementary

Width	5.2 mm
Height	36.5 mm
Connections - Terminals	1 x push-in: upstream 1 x push-in: downstream
Number Of Connections	2
Connection Position	Top
Number Of Measurement Input	2
Cable Cross Section	0.14...2.5 mm ² , flexible without cable end 0.14...4 mm ² , solid with cable end 0.2...2.5 mm ² , flexible with cable end 0.2...2.5 mm ² , solid without cable end
Wire Stripping Length	10 mm
Tool Type	Connection: without tool Disconnection: flat screwdriver
[Ue] Rated Operational Voltage	800 V conforming to EN/IEC 60947-7-1 600 V CSA 600 V cURus
[In] Rated Current	24 A conforming to EN/IEC 60947-7-1 20 A CSA 20 A cURus

Disclaimer: This documentation is not intended as a substitute for and is not to be used for determining suitability or reliability of these products for specific user applications

Material	Polyamide 6/6: insulating case Copper alloy: connector and screw Copper alloy: commoning link Chromium-nickel steel: spring
Dielectric Loss	0.01 at 1 MHz conforming to IEC 60250 0.01 at 1 MHz conforming to VDE 0303-T4
Dielectric Constant	3.7 at 1 MHz
Resistivity	10000 MΩ.m conforming to IEC 60093 10000 MΩ.m conforming to VDE 0303-T30
Surface Resistance	1000 GΩ conforming to IEC 60093 1000 GΩ conforming to VDE 0303-T30
Creep Resistance	500 CTI (> 400 kV) conforming to IEC 60093 500 CTI (> 400 kV) conforming to VDE 0303-T30
Flame Retardance	V0, thickness 0.8 mm conforming to UL 94
Net Weight	7.2 g
Range Compatibility	Prisma G Prisma P Prisma PH Prisma Pack Spacial Kaedra Pragma TeSys
Product Compatibility	Spacial enclosures

Environment

Product Certifications	LR CSA ATEX EAC GL IEC-Ex cURus VDE
Dielectric Strength	1000 V conforming to IEC 60243-1
Ambient Air Temperature For Operation	-40...130 °C conforming to IEC 60216-1 -40...130 °C conforming to VDE 0304-T21

Packing Units

Unit Type Of Package 1	PCE
Number Of Units In Package 1	1
Package 1 Height	5.7 cm
Package 1 Width	6.7 cm
Package 1 Length	27.2 cm
Package 1 Weight	5 g
Unit Type Of Package 2	BB1
Number Of Units In Package 2	50
Package 2 Height	5.7 cm
Package 2 Width	6.7 cm
Package 2 Length	27.2 cm
Package 2 Weight	327 g
Unit Type Of Package 3	S01

Number Of Units In Package 3	200
Package 3 Height	15 cm
Package 3 Width	15 cm
Package 3 Length	40 cm
Package 3 Weight	1.501 kg

Contractual warranty

Warranty	18 months
----------	-----------

Sustainability

Green Premium™ label is Schneider Electric's commitment to delivering products with best-in-class environmental performance. Green Premium promises compliance with the latest regulations, transparency on environmental impacts, as well as circular and low-CO₂ products.

Guide to assessing product sustainability is a white paper that clarifies global eco-label standards and how to interpret environmental declarations.

[Learn more about Green Premium >](#)

[Guide to assess a product's sustainability >](#)



Transparency RoHS/REACH

Well-being performance

✓ Reach Free Of Svhc

✓ Toxic Heavy Metal Free

✓ Mercury Free

✓ Rohs Exemption Information [Yes](#)

✓ Halogen Free Plastic Parts Product

Certifications & Standards

Reach Regulation	REACH Declaration
Eu Rohs Directive	Pro-active compliance (Product out of EU RoHS legal scope) EU RoHS Declaration
China Rohs Regulation	China RoHS declaration Pro-active China RoHS declaration (out of China RoHS legal scope)
Environmental Disclosure	Product Environmental Profile
Circularity Profile	No need of specific recycling operations