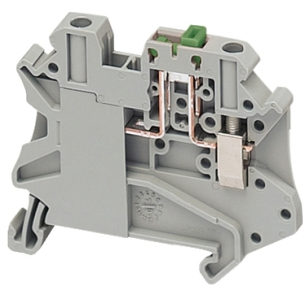


Product data sheet

Specifications



Terminal block, Linergy TR, screw type, knife disconnect, 2 points, 4mm², with test point, orange

NSYTRV42STAR

Main

Range	Linergy
Product Name	Linergy TR
Product Or Component Type	Terminal block
Device Short Name	TRV
Terminal Block Type	Blade disconnect
Terminal Block Level	1
Mounting Mode	Clip-on
Nominal Cross Section	4 mm ²
Length	57.8 mm
Colour	Orange
Quantity Per Set	Set of 50

Complementary

Width	6.2 mm
Height	49.1 mm
Connections - Terminals	1 x screw terminal: upstream 1 x screw terminal: downstream
Number Of Connections	2
Connection Position	Sideways
Number Of Measurement Input	2
Cable Cross Section	0.14...6 mm ² , flexible without cable end 0.14...6 mm ² , solid
Tightening Torque	0.6...0.8 N.m
Wire Stripping Length	9 mm
Tool Type	Connection: screwdriver Disconnection: screwdriver
[Ue] Rated Operational Voltage	500 V conforming to EN/IEC 60947-7-1 600 V CSA 600 V cURus
[In] Rated Current	20 A conforming to EN/IEC 60947-7-1 16 A CSA 16 A cURus
Material	Polyamide 6/6: insulating case
Dielectric Loss	0.01 at 1 MHz conforming to IEC 60250 0.01 at 1 MHz conforming to VDE 0303-T4

Disclaimer: This documentation is not intended as a substitute for and is not to be used for determining suitability or reliability of these products for specific user applications

Dielectric Constant	3.7 at 1 MHz
Resistivity	10000 MΩ.m conforming to IEC 60093 10000 MΩ.m conforming to VDE 0303-T30
Surface Resistance	1000 GΩ conforming to IEC 60093 1000 GΩ conforming to VDE 0303-T30
Creep Resistance	500 CTI (> 400 kV) conforming to IEC 60093 500 CTI (> 400 kV) conforming to VDE 0303-T30
Flame Retardance	V0, thickness0.8 mm conforming to UL 94
Net Weight	13.8 g
Provided Equipment	test point
Range Compatibility	Prisma G Prisma P Prisma PH Prisma Pack Spacial Kaedra Pragma TeSys
Product Compatibility	Spacial enclosures

Environment

Product Certifications	CSA cURus EAC
Dielectric Strength	1000 V conforming to IEC 60243-1
Ambient Air Temperature For Operation	-40...130 °C conforming to IEC 60216-1 -40...130 °C conforming to VDE 0304-T21

Packing Units

Unit Type Of Package 1	PCE
Number Of Units In Package 1	1
Package 1 Height	5.0 cm
Package 1 Width	7.0 cm
Package 1 Length	27.0 cm
Package 1 Weight	14.0 g
Unit Type Of Package 2	CAR
Number Of Units In Package 2	50
Package 2 Height	5.0 cm
Package 2 Width	7.0 cm
Package 2 Length	27.0 cm
Package 2 Weight	740.0 g

Contractual warranty

Warranty	18 months
----------	-----------

Sustainability

Green Premium™ label is Schneider Electric's commitment to delivering products with best-in-class environmental performance. Green Premium promises compliance with the latest regulations, transparency on environmental impacts, as well as circular and low-CO₂ products.

Guide to assessing product sustainability is a white paper that clarifies global eco-label standards and how to interpret environmental declarations.

[Learn more about Green Premium >](#)

[Guide to assess a product's sustainability >](#)



Transparency RoHS/REACH

Well-being performance

✓ Mercury Free

✓ Rohs Exemption Information [Yes](#)

✓ Halogen Free Plastic Parts Product

Certifications & Standards

Reach Regulation	REACH Declaration
Eu Rohs Directive	Compliant with Exemptions
China Rohs Regulation	China RoHS declaration Product out of China RoHS scope. Substance declaration for your information
Environmental Disclosure	Product Environmental Profile
Weee	The product must be disposed on European Union markets following specific waste collection and never end up in rubbish bins
Circularity Profile	No need of specific recycling operations
California Proposition 65	WARNING: This product can expose you to chemicals including: Lead and lead compounds, which is known to the State of California to cause cancer and birth defects or other reproductive harm. For more information go to www.P65Warnings.ca.gov