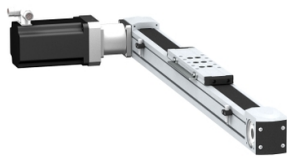


# Product data sheet

Specifications



portal axis PAS E - profile size  
110x110mm - toothed belt - ball -  
stroke 700mm

PAS44E0700

⚠ Discontinued on: Dec 31, 2021

⚠ To be end-of-service on: Dec 31, 2026

⚠ Discontinued - Service only

## Main

Range Of Product	Lexium PAS E
Product Or Component Type	Portal axis
Product Specific Application	For 1 direction
Load Position	On carriage
Drive Type	Toothed belt
Type Of Guide	Ball

## Complementary

Operating Position	Horizontal
Typical Payload	50 kg
Distance Per Revolution	264 mm
Operating Force	2600 N for Fx 6270 N for Fy 6270 N for Fz
Maximum Speed	2 m/s
Maximum Acceleration	15 m/s <sup>2</sup>
Max. Drive Torque	4 N.m
Max. Torque	<5 N.m for Mx <11 N.m for My <17 N.m for Mz
Stroke	700 mm
Product Weight	37 kg at 0 stroke with carriage and motor 4.2 kg of carriage 63.5 kg total
Repeat Accuracy	+/- 0.05 mm
Profile Dimension	110 x 110 mm
Service Life	30000 km
Associated Module	PLE120 planetary gearbox, reduction ratio: 5:1 (supplied) BMH1401P06A2A servo motor (supplied) LXM32.D72N4 servo drive (not supplied)

## Packing Units

Unit Type Of Package 1	PCE
Number Of Units In Package 1	1

Disclaimer: This documentation is not intended as a substitute for and is not to be used for determining suitability or reliability of these products for specific user applications

Package 1 Height	30.5 cm
Package 1 Width	48.8 cm
Package 1 Length	150.2 cm
Package 1 Weight	63.51 kg

## Contractual warranty

Warranty	18 months
----------	-----------

## Sustainability





**Green Premium™** label is Schneider Electric's commitment to delivering products with best-in-class environmental performance. Green Premium promises compliance with the latest regulations, transparency on environmental impacts, as well as circular and low-CO<sub>2</sub> products.

**Guide to assessing product sustainability** is a white paper that clarifies global eco-label standards and how to interpret environmental declarations.

[Learn more about Green Premium >](#)

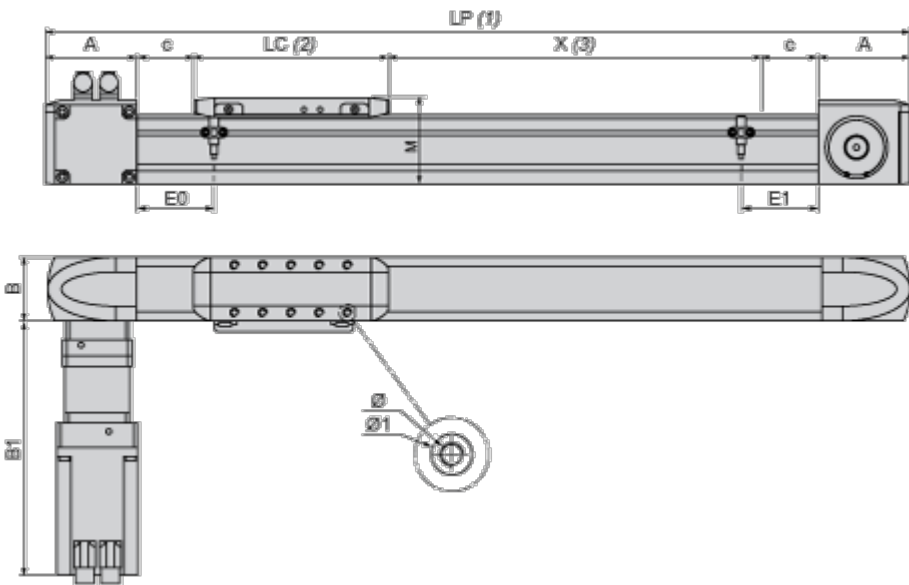
[Guide to assess a product's sustainability >](#)

## Well-being performance

 Reach Free Of Svhc	
 Mercury Free	
 Rohs Exemption Information	<a href="#">Yes</a>
 Pvc Free	
<b>Reach Regulation</b>	<a href="#">REACH Declaration</a>
<b>Eu Rohs Directive</b>	Pro-active compliance (Product out of EU RoHS legal scope)
<b>China Rohs Regulation</b>	<a href="#">China RoHS declaration</a>
<b>Weee</b>	The product must be disposed on European Union markets following specific waste collection and never end up in rubbish bins
<b>California Proposition 65</b>	WARNING: This product can expose you to chemicals including: Lead and lead compounds, which is known to the State of California to cause cancer and birth defects or other reproductive harm. For more information go to <a href="http://www.P65Warnings.ca.gov">www.P65Warnings.ca.gov</a>

Dimensions Drawings

Size Characteristics



- (1) LP : total length of axis
- (2) LC : length of carriage
- (3) X : Stroke, refer to product characteristics.

A	mm	146
	in.	5.75
B	mm	110
	in.	4.33
B1	mm	360
	in.	14.17
c	mm	40
	in.	1.57
E0	mm	110
	in.	4.33
E1	mm	110
	in.	4.33
LC	mm	310
	in.	12.20

LP	mm	= 372 + LC + X
	in.	= 14.64 + LC + X
M	mm	135
	in.	5.31
Ø	mm	M8 X 18
	in.	M8 X 0.70
Ø1	mm	12 <sup>H7</sup> X 2.1
	in.	12 <sup>H7</sup> X 0.08

Mounting and Clearance

Servo Motor Mounting

---

Standard servo motor mounting

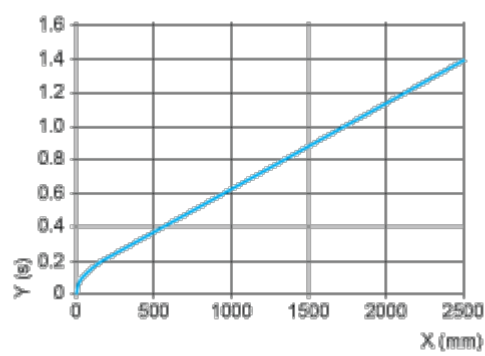


Servo motor mounted on the left



Performance Curves

Axis Positioning Time as a Function of the Stroke



X : Stroke

Y : Positioning time

Technical Description

Forces and Torques Exerted on the Lexium PAS E Portal Axis

---

