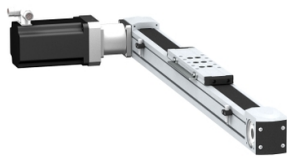


Product data sheet

Specifications



portal axis PAS E - profile size
110x110mm - toothed belt - ball -
stroke 1400mm

PAS44E1400

⚠ Discontinued on: Dec 31, 2021

⚠ To be end-of-service on: Dec 31, 2026

⚠ Discontinued - Service only

Main

Range Of Product	Lexium PAS E
Product Or Component Type	Portal axis
Product Specific Application	For 1 direction
Load Position	On carriage
Drive Type	Toothed belt
Type Of Guide	Ball

Complementary

Operating Position	Horizontal
Typical Payload	50 kg
Distance Per Revolution	264 mm
Operating Force	2600 N for Fx 6270 N for Fy 6270 N for Fz
Maximum Speed	2 m/s
Maximum Acceleration	15 m/s ²
Max. Drive Torque	4 N.m
Max. Torque	<5 N.m for Mx <11 N.m for My <17 N.m for Mz
Stroke	1400 mm
Product Weight	37 kg at 0 stroke with carriage and motor 4.2 kg of carriage 82.3 kg total
Repeat Accuracy	+/- 0.05 mm
Profile Dimension	110 x 110 mm
Service Life	30000 km
Associated Module	PLE120 planetary gearbox, reduction ratio: 5:1 (supplied) BMH1401P06A2A servo motor (supplied) LXM32.D72N4 servo drive (not supplied)

Packing Units

Unit Type Of Package 1	PCE
Number Of Units In Package 1	1

Disclaimer: This documentation is not intended as a substitute for and is not to be used for determining suitability or reliability of these products for specific user applications

Package 1 Height	30.5 cm
Package 1 Width	48.8 cm
Package 1 Length	220.2 cm
Package 1 Weight	82.348 kg

Contractual warranty

Warranty	18 months
----------	-----------

Sustainability





Green Premium™ label is Schneider Electric's commitment to delivering products with best-in-class environmental performance. Green Premium promises compliance with the latest regulations, transparency on environmental impacts, as well as circular and low-CO₂ products.

Guide to assessing product sustainability is a white paper that clarifies global eco-label standards and how to interpret environmental declarations.

[Learn more about Green Premium >](#)

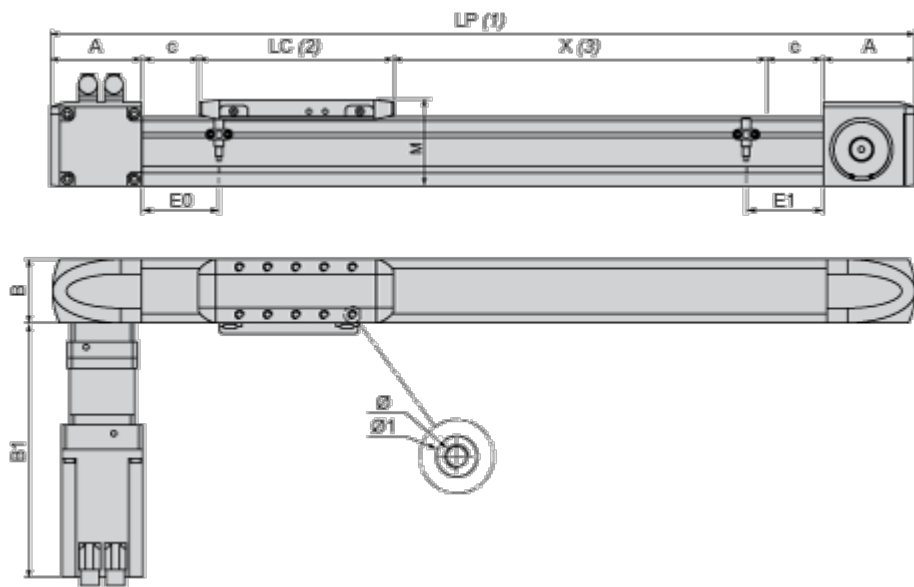
[Guide to assess a product's sustainability >](#)

Well-being performance

	Reach Free Of Svhc	
	Mercury Free	
	Rohs Exemption Information	Yes
	Pvc Free	
Reach Regulation	REACH Declaration	
Eu Rohs Directive	Pro-active compliance (Product out of EU RoHS legal scope)	
China Rohs Regulation	China RoHS declaration	
Weee	The product must be disposed on European Union markets following specific waste collection and never end up in rubbish bins	
California Proposition 65	WARNING: This product can expose you to chemicals including: Lead and lead compounds, which is known to the State of California to cause cancer and birth defects or other reproductive harm. For more information go to www.P65Warnings.ca.gov	

Dimensions Drawings

Size Characteristics



- (1) LP : total length of axis
- (2) LC : length of carriage
- (3) X : Stroke, refer to product characteristics.

A	mm	146
	in.	5.75
B	mm	110
	in.	4.33
B1	mm	360
	in.	14.17
c	mm	40
	in.	1.57
E0	mm	110
	in.	4.33
E1	mm	110
	in.	4.33
LC	mm	310
	in.	12.20

LP	mm	= 372 + LC + X
	in.	= 14.64 + LC + X
M	mm	135
	in.	5.31
Ø	mm	M8 X 18
	in.	M8 X 0.70
Ø1	mm	12 ^{H7} X 2.1
	in.	12 ^{H7} X 0.08

Mounting and Clearance

Servo Motor Mounting

Standard servo motor mounting

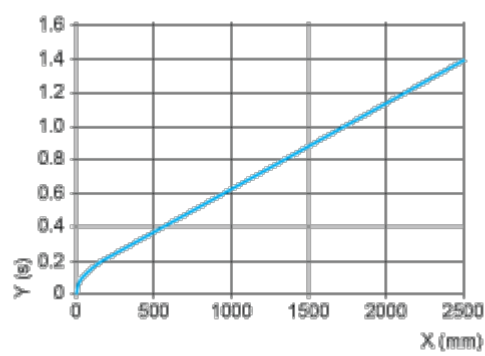


Servo motor mounted on the left



Performance Curves

Axis Positioning Time as a Function of the Stroke



X : Stroke

Y : Positioning time

Technical Description

Forces and Torques Exerted on the Lexium PAS E Portal Axis

