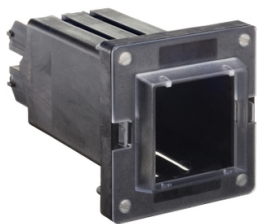


Product data sheet

Specifications



RelayAux - flush mounting socket screw base for auxiliary relay connection

REL91355

Main

Range Of Product	RelayAux
Product Or Component Type	Socket
Product Compatibility	REL9122x REL9123x
Device Mounting	Flush

Complementary

Insulation Resistance Measurements	> 100 MOhm at 500 V DC conforming to IEC 60255-5
Contacts Material	AgNi
Mechanical Robustness	Shocks 11 ms (5 gn) conforming to IEC 60068-2-27 Bumps 16 ms (10 Gn) conforming to IEC 60068-2-29
Width	75 mm
Height	80 mm
Depth	101.5 mm
Net Weight	0.3 kg
[Uimp] Rated Impulse Withstand Voltage	5 kV during 1.2/50 μ s conforming to IEC 60255-5

Environment

Maximum Relative Humidity	93 % at 40 °C
Electromagnetic Compatibility	Conducted and radiated emissions criteria A conforming to EN 55022 Conducted and radiated emissions criteria B conforming to EN 55022 Electrostatic discharge - test level: 15 kV level 4 (air discharge) conforming to IEC 61000-4-2 Electrostatic discharge - test level: 8 kV level 4 (contact discharge) conforming to IEC 61000-4-2 Radiated radio-frequency electromagnetic field immunity test - test level: 10 V/m, 80 MHz...1 GHz level 3 conforming to IEC 61000-4-3 Radiated radio-frequency electromagnetic field immunity test - test level: 10 V/m, 80 MHz...1 GHz level 3 conforming to ENV 50204 Electrical fast transient/burst immunity test - test level: 4 kV, 5 kHz level 4 (1 min) conforming to IEC 61000-4-4 Surge immunity test - test level: 2 kV level 3 (common mode) conforming to IEC 61000-4-5 Surge immunity test - test level: 1 kV level 3 (differential mode) conforming to IEC 61000-4-5 Conducted RF disturbances - test level: 10 V, 0.15...80 MHz level 3 conforming to IEC 61000-4-6 Magnetic field at power frequency - test level: 100 A/m level 5 (continuous) conforming to IEC 61000-4-8 Magnetic field at power frequency - test level: 1000 A/m level 5 (2 s) conforming to IEC 61000-4-8 Damped oscillating waves - test level: 2.5 kV, 1 MHz level 3 (common mode) conforming to IEC 60255-22-1 Damped oscillating waves - test level: 1 kV, 1 MHz level 3 (differential mode) conforming to IEC 60255-22-1

Disclaimer: This documentation is not intended as a substitute for and is not to be used for determining suitability or reliability of these products for specific user applications

Dielectric Strength	2 kV 50 Hz 1 min conforming to IEC 60255-5
Vibration Resistance	1 gn (f = 58...150 Hz) conforming to IEC 60068-2-1 +/- 0.075 mm (f = 10...58 Hz) conforming to IEC 60068-2-1
Ip Degree Of Protection	IP20 conforming to IEC 60529
Operating Altitude	< 2000 m
Fire Resistance	850 °C during 30 s
Directives	92/31/EEC - electromagnetic compatibility 72/23/EEC - low voltage directive 93/68/EEC - low voltage directive 89/336/EEC - electromagnetic compatibility
Product Certifications	CE UL listed file E322124
Ambient Air Temperature For Storage	-25...70 °C
Ambient Air Temperature For Operation	-25...70 °C

Packing Units

Unit Type Of Package 1	PCE
Number Of Units In Package 1	1
Package 1 Height	8.5 cm
Package 1 Width	8.0 cm
Package 1 Length	17.5 cm
Package 1 Weight	249.0 g
Unit Type Of Package 2	S03
Number Of Units In Package 2	18
Package 2 Height	30.0 cm
Package 2 Width	30.0 cm
Package 2 Length	40.0 cm
Package 2 Weight	4.983 kg

Sustainability

Green Premium™ label is Schneider Electric’s commitment to delivering products with best-in-class environmental performance. Green Premium promises compliance with the latest regulations, transparency on environmental impacts, as well as circular and low-CO₂ products.

Guide to assessing product sustainability is a white paper that clarifies global eco-label standards and how to interpret environmental declarations.

[Learn more about Green Premium >](#)

[Guide to assess a product’s sustainability >](#)

Well-being performance

✓	Reach Free Of Svhc	
✓	Mercury Free	
✓	Rohs Exemption Information	Yes
Reach Regulation		REACH Declaration
Eu Rohs Directive		Pro-active compliance (Product out of EU RoHS legal scope) EU RoHS Declaration
China Rohs Regulation		China RoHS declaration