

Product data sheet

Specifications



socket, Harmony Electromechanical Relays, for RPM1 power relays, 16A screw clamp terminals, mixed contact

RPZF1

Main

Range Of Product	Harmony Electromechanical Relays
Device Short Name	RPZ
Product Or Component Type	Socket
Product Compatibility	Plug-in relay RPM with 1 C/O contact
Contacts Type And Composition	1 C/O
[Ith] Conventional Free Air Thermal Current	16 A
[Ue] Rated Operational Voltage	250 V

Complementary

Contact Terminal Arrangement	Mixed
Tightening Torque	< 1 N.m for M3.5 screw(s) < 0.8 N.m for M3 screw(s)
Fixing Mode	By screw (panel) Clip-on (35 mm symmetrical DIN rail)
[Uimp] Rated Impulse Withstand Voltage	4 kV
Overvoltage Category	III
Pollution Degree	3
Net Weight	0.031 kg

Environment

Connections - Terminals	Contact terminal - screw clamp terminals, 2 wires solid cable without cable end 0.5...4 mm² / AWG 20...AWG 12 Contact terminal - screw clamp terminals, 1 wire solid cable without cable end 0.5...4 mm² / AWG 20...AWG 12 Contact terminal - screw clamp terminals, 2 wires flexible cable with cable end 0.5...2.5 mm² / AWG 20...AWG 14 Contact terminal - screw clamp terminals, 1 wire flexible cable with cable end 0.5...2.5 mm² / AWG 20...AWG 14 Coil terminal - screw clamp terminals, 2 wires solid cable without cable end 0.5...2.5 mm² / AWG 20...AWG 14 Coil terminal - screw clamp terminals, 1 wire solid cable without cable end 0.5...2.5 mm² / AWG 20...AWG 14 Coil terminal - screw clamp terminals, 2 wires flexible cable with cable end 0.5...1.5 mm² / AWG 20...AWG 16 Coil terminal - screw clamp terminals, 1 wire flexible cable with cable end 0.5...1.5 mm² / AWG 20...AWG 16
Ip Degree Of Protection	IP20 conforming to IEC 60529
Dielectric Strength	2500 V
Standards	IEC 61984 CSA C22.2 No 14 UL 508

Disclaimer: This documentation is not intended as a substitute for and is not to be used for determining suitability or reliability of these products for specific user applications

Product Certifications	CSA UL EAC CE
Ambient Air Temperature For Storage	-40...85 °C
Ambient Air Temperature For Operation	-40...55 °C

Packing Units

Unit Type Of Package 1	PCE
Number Of Units In Package 1	1
Package 1 Height	3 cm
Package 1 Width	2.1 cm
Package 1 Length	8.5 cm
Package 1 Weight	30 g
Unit Type Of Package 2	BB1
Number Of Units In Package 2	10
Package 2 Height	6.5 cm
Package 2 Width	9 cm
Package 2 Length	10.7 cm
Package 2 Weight	335 g
Unit Type Of Package 3	S03
Number Of Units In Package 3	240
Package 3 Height	30 cm
Package 3 Width	30 cm
Package 3 Length	40 cm
Package 3 Weight	8.593 kg

Contractual warranty

Warranty	18 months
----------	-----------

Sustainability

Green Premium™ label is Schneider Electric's commitment to delivering products with best-in-class environmental performance. Green Premium promises compliance with the latest regulations, transparency on environmental impacts, as well as circular and low-CO₂ products.

Guide to assessing product sustainability is a white paper that clarifies global eco-label standards and how to interpret environmental declarations.

[Learn more about Green Premium >](#)

[Guide to assess a product's sustainability >](#)



Transparency RoHS/REACH

Well-being performance

✓ Reach Free Of Svhc

✓ Toxic Heavy Metal Free

✓ Mercury Free

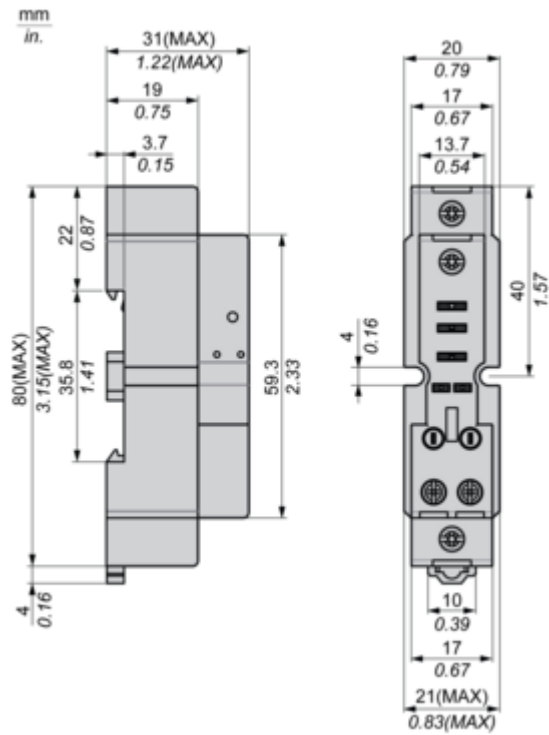
✓ Rohs Exemption Information Yes

Certifications & Standards

Reach Regulation	REACH Declaration
Eu Rohs Directive	Pro-active compliance (Product out of EU RoHS legal scope) EU RoHS Declaration
China Rohs Regulation	China RoHS declaration
Environmental Disclosure	Product Environmental Profile
Weee	The product must be disposed on European Union markets following specific waste collection and never end up in rubbish bins
Circularity Profile	No need of specific recycling operations
California Proposition 65	WARNING: This product can expose you to chemicals including: Nickel compounds, which is known to the State of California to cause cancer, and Di-isodecyl phthalate (DIDP), which is known to the State of California to cause birth defects or other reproductive harm. For more information go to www.P65Warnings.ca.gov

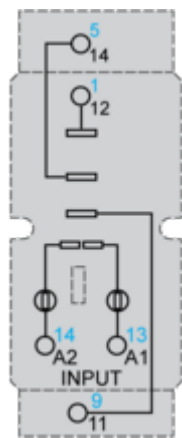
Dimensions Drawings

Dimensions



Connections and Schema

Wiring Diagram



Symbols shown in blue correspond to Nema marking.