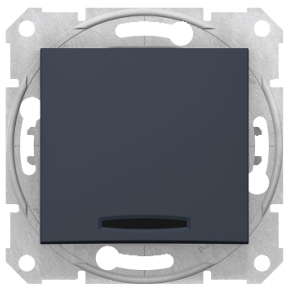


# Product data sheet

Specifications



## Sedna - 1pole pushbutton - 10A locator light, graphite

SDN1600170

⚠ Discontinued on: Dec 30, 2023

⚠ Discontinued

### Main

Range	Sedna
Product Or Component Type	Push-button
Device Presentation	Mechanism with fixing frame
Device Application	Control
Switch Function	1-pole push-button
Colour Tint	Graphite

### Complementary

Device Mounting	Flush
Surface Finish	Glossy
Marking	Without marking
Kind Of Terminals	Screwless terminals
Power Range	2300 W
Wire Structure	Flexible Rigid
Wire Stripping Length	13 mm
Fixing Mode	Claws, span of claws working range: 51...70 mm Screws
Height	71 mm
Width	71 mm
Depth	37 mm
Depth Of Visual Part	12 mm
Net Weight	0.07431 kg
Market Segment	Small commercial Residential

### Environment

Ip Degree Of Protection	IP20
Conformity Mark	CE
Product Certifications	GOST-R
Standards	IEC 60669-1

Disclaimer: This documentation is not intended as a substitute for and is not to be used for determining suitability or reliability of these products for specific user applications

# Packing Units

Unit Type Of Package 1	PCE
Number Of Units In Package 1	1
Package 1 Height	4.000 cm
Package 1 Width	7.000 cm
Package 1 Length	7.000 cm
Package 1 Weight	58.400 g
Unit Type Of Package 2	BB1
Number Of Units In Package 2	10
Package 2 Height	9.500 cm
Package 2 Width	18.500 cm
Package 2 Length	27.500 cm
Package 2 Weight	662.000 g
Unit Type Of Package 3	S04
Number Of Units In Package 3	120
Package 3 Height	30.000 cm
Package 3 Width	40.000 cm
Package 3 Length	60.000 cm
Package 3 Weight	8.593 kg

## Sustainability

**Green Premium™ label** is Schneider Electric's commitment to delivering products with best-in-class environmental performance. Green Premium promises compliance with the latest regulations, transparency on environmental impacts, as well as circular and low-CO<sub>2</sub> products.

**Guide to assessing product sustainability** is a white paper that clarifies global eco-label standards and how to interpret environmental declarations.

[Learn more about Green Premium >](#)

[Guide to assess a product's sustainability >](#)



Transparency   RoHS/REACH

## Well-being performance

✓ Reach Free Of Svhc

✓ Toxic Heavy Metal Free

✓ Mercury Free

✓ Rohs Exemption Information   Yes

## Certifications & Standards

Reach Regulation	<a href="#">REACH Declaration</a>
Eu Rohs Directive	Compliant <a href="#">EU RoHS Declaration</a>
China Rohs Regulation	<a href="#">China RoHS declaration</a> Pro-active China RoHS declaration (out of China RoHS legal scope)
Environmental Disclosure	<a href="#">Product Environmental Profile</a>
Weee	The product must be disposed on European Union markets following specific waste collection and never end up in rubbish bins
Circularity Profile	No need of specific recycling operations