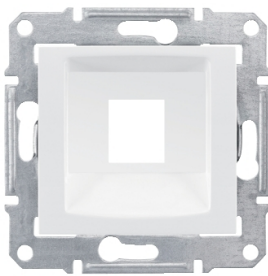


Product data sheet

Specifications



Sedna plate, single; KRONE, cat5e, cat6 UTP (wo connector), white

SDN4300321

⚠ Discontinued on: Dec 30, 2023

⚠ Discontinued

Main

| | |
|-----------------------|---|
| Range Name | Sedna |
| Function | Central plate |
| Delivery Form | Without frame |
| Socket Number | 1 |
| Product Compatibility | Krone modular jack Cat. 5e UTP Krone modular jack Cat. 6 UTP |

Complementary

| | |
|---------------------------|--|
| Fixing Mode | Claws, span of claws working range: 51...80 mm Screws |
| Height | 71 mm |
| Width | 71 mm |
| Depth | 36 mm |
| Depth Of Visual Part | 7 mm |
| Net Weight | 0.07453 kg |
| Material Of Visible Parts | Thermoplastic ABS-UV stabilised |
| Surface Finish | Glossy |

Packing Units

| | |
|------------------------------|-----------|
| Unit Type Of Package 1 | PCE |
| Number Of Units In Package 1 | 1 |
| Package 1 Height | 7.100 cm |
| Package 1 Width | 7.100 cm |
| Package 1 Length | 3.600 cm |
| Package 1 Weight | 75.000 g |
| Unit Type Of Package 2 | BB1 |
| Number Of Units In Package 2 | 10 |
| Package 2 Height | 9.400 cm |
| Package 2 Width | 18.500 cm |
| Package 2 Length | 27.500 cm |
| Package 2 Weight | 795.000 g |

Disclaimer: This documentation is not intended as a substitute for and is not to be used for determining suitability or reliability of these products for specific user applications

| | |
|------------------------------|-----------|
| Unit Type Of Package 3 | S04 |
| Number Of Units In Package 3 | 120 |
| Package 3 Height | 30.000 cm |
| Package 3 Width | 40.000 cm |
| Package 3 Length | 60.000 cm |
| Package 3 Weight | 9.700 kg |

Sustainability

Green Premium™ label is Schneider Electric's commitment to delivering products with best-in-class environmental performance. Green Premium promises compliance with the latest regulations, transparency on environmental impacts, as well as circular and low-CO₂ products.

Guide to assessing product sustainability is a white paper that clarifies global eco-label standards and how to interpret environmental declarations.

[Learn more about Green Premium >](#)

[Guide to assess a product's sustainability >](#)



Transparency RoHS/REACH

Well-being performance

✓ Mercury Free

✓ Rohs Exemption Information [Yes](#)

Certifications & Standards

| | |
|--------------------------|---|
| Reach Regulation | REACH Declaration |
| Eu Rohs Directive | Compliant with Exemptions |
| China Rohs Regulation | China RoHS declaration Product out of China RoHS scope. Substance declaration for your information |
| Environmental Disclosure | Product Environmental Profile |
| Weee | The product must be disposed on European Union markets following specific waste collection and never end up in rubbish bins |
| Circularity Profile | No need of specific recycling operations |