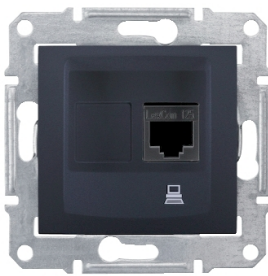


# Product data sheet

Specifications



## Sedna - single data outlet - RJ45 cat.6 UTP without frame graphite

SDN4700170

 **Discontinued on:** Dec 30, 2023

 **Discontinued**

### Main

Range Name	Sedna
Range	Sedna
Function	Data socket
Device Application	Communication
Delivery Form	Without frame
Connector Shielding Type	UTP
Data Connector Type	RJ45 - 4 contacts
Cover Plate Color	Graphite
Market Segment	Residential Small commercial

### Complementary

Communication Network Category	6
Socket Number	1
Wire Structure	Rigid
Kind Of Terminals	Screw connection
Material Of Visible Parts	Thermoplastic ABS-UV stabilised
Surface Finish	Glossy
Installation Direction	Straight
Installation	Flush
Fixing Mode	Claws, span of claws working range: 51...80 mm Screws
Height	71 mm
Width	71 mm
Depth	36 mm
Depth Of Visual Part	14.5 mm
Net Weight	0.05274 kg

### Environment

Ip Degree Of Protection	IP20
-------------------------	------

### Packing Units

Disclaimer: This documentation is not intended as a substitute for and is not to be used for determining suitability or reliability of these products for specific user applications

Unit Type Of Package 1	PCE
Number Of Units In Package 1	1
Package 1 Height	4.000 cm
Package 1 Width	7.000 cm
Package 1 Length	7.000 cm
Package 1 Weight	54.000 g
Unit Type Of Package 2	BB1
Number Of Units In Package 2	10
Package 2 Height	9.500 cm
Package 2 Width	18.500 cm
Package 2 Length	27.500 cm
Package 2 Weight	652.000 g
Unit Type Of Package 3	S04
Number Of Units In Package 3	120
Package 3 Height	30.000 cm
Package 3 Width	40.000 cm
Package 3 Length	60.000 cm
Package 3 Weight	8.473 kg

## Sustainability

**Green Premium™ label** is Schneider Electric's commitment to delivering products with best-in-class environmental performance. Green Premium promises compliance with the latest regulations, transparency on environmental impacts, as well as circular and low-CO<sub>2</sub> products.

**Guide to assessing product sustainability** is a white paper that clarifies global eco-label standards and how to interpret environmental declarations.

[Learn more about Green Premium >](#)

[Guide to assess a product's sustainability >](#)



RoHS/REACH

## Well-being performance

✓	Reach Free Of Svhc	
✓	Toxic Heavy Metal Free	
✓	Mercury Free	
✓	Rohs Exemption Information	Yes

## Certifications & Standards

Reach Regulation	<a href="#">REACH Declaration</a>
Eu Rohs Directive	Compliant <a href="#">EU RoHS Declaration</a>
China Rohs Regulation	<a href="#">China RoHS declaration</a> Pro-active China RoHS declaration (out of China RoHS legal scope)
Weee	The product must be disposed on European Union markets following specific waste collection and never end up in rubbish bins
Circularity Profile	No need of specific recycling operations