

Product data sheet

Specifications



SSR - DIN rail mount - input 4-28 V DC, output 4-28 V DC, 0.1A, negative logic

SSLM1ND101BD

⚠ Discontinued on: Oct 1, 2021

⚠ Discontinued

Main

Range Of Product	Harmony Relay
Product Or Component Type	Solid state relay
Device Short Name	SSLM
Network Number Of Phases	1 phase

Complementary

Mounting Support	Symmetrical DIN rail
[In] Rated Current	0.1 A
Output Voltage	4...28 V DC
[Uc] Control Circuit Voltage	4...28 V DC
Contacts Type And Configuration	1 NC
Clamping Force	0.6...0.8 N.m
Connections - Terminals	Screw terminals,clamping capacity: 1 x 0.2...1 x 5.26 mm² (AWG 24...AWG 10)
Switching Voltage	4 V DC turn-on
Load Current	0.1 A
Maximum Voltage Drop	<0.5 V on-state
Response Time	30 µs (turn-on) 60 µs (turn-off)
Overvoltage Category	III
Width	7.5 mm
Height	80 mm
Depth	63 mm
Net Weight	0.03 kg

Environment

Dielectric Strength	4000 V for input/output
Pollution Degree	2
Product Certifications	UL EAC CSA

Disclaimer: This documentation is not intended as a substitute for and is not to be used for determining suitability or reliability of these products for specific user applications

Marking	CSA UL EAC CE
Ambient Air Temperature For Operation	0...70 °C

Packing Units

Unit Type Of Package 1	PCE
Number Of Units In Package 1	1
Package 1 Height	6 cm
Package 1 Width	0.75 cm
Package 1 Length	8 cm
Package 1 Weight	31 g

Sustainability

Green Premium™ label is Schneider Electric's commitment to delivering products with best-in-class environmental performance. Green Premium promises compliance with the latest regulations, transparency on environmental impacts, as well as circular and low-CO₂ products.

Guide to assessing product sustainability is a white paper that clarifies global eco-label standards and how to interpret environmental declarations.

[Learn more about Green Premium >](#)

[Guide to assess a product's sustainability >](#)



Transparency RoHS/REACH

Well-being performance

✓ Mercury Free

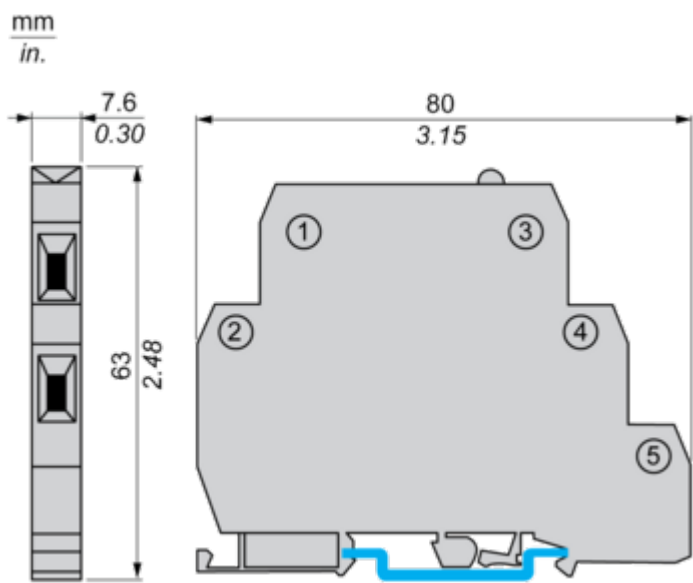
✓ Rohs Exemption Information [Yes](#)

Certifications & Standards

Reach Regulation	REACH Declaration
Eu Rohs Directive	Pro-active compliance (Product out of EU RoHS legal scope)
China Rohs Regulation	China RoHS declaration
Environmental Disclosure	Product Environmental Profile
Circularity Profile	End of Life Information
California Proposition 65	WARNING: This product can expose you to chemicals including: Nickel compounds, which is known to the State of California to cause cancer, and Di-isodecyl phthalate (DIDP), which is known to the State of California to cause birth defects or other reproductive harm. For more information go to www.P65Warnings.ca.gov

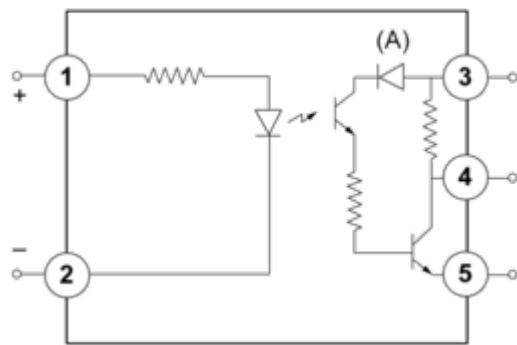
Dimensions Drawings

Dimensions



Connections and Schema

Wiring Diagram



1,2 : Field VDC

3 : Vcc

4 : Logic

5 : Ground

(A) LED