

Product data sheet

Specifications



standard analog output HART kit STB - 4..20 mA - 2 O - 15 bits + sign

STBACO8220K

Main

| | |
|----------------------------|--|
| Range Of Product | Modicon STB distributed I/O solution |
| Product Or Component Type | Standard analog output kit |
| Kit Composition | STBACO8220 module STBXBA2000 base STBXTS2100, 6-terminal spring clamp connector STBXTS1100, 6-terminal screw type connector |
| Analogue Output Type | Current: 4...20 mA |
| Analogue Output Number | 2 |
| Analogue Output Resolution | 15 bits + sign |

Complementary

| | |
|--|---|
| Analogue Output Current | 0.02 A |
| Response Time | 40 ms plus update time |
| Cold Swapping | Yes |
| Hot Swapping | Yes for standard NIMs |
| Fallback | State 0 basic NIMs User configurable standard NIMs |
| Data Format | EN 61131-2 IEC 61131-2 |
| Update Time | 8 ms |
| Integral Linearity | +/- 0.05 %FS |
| Differential Linearity | Monotonic |
| Absolute Accuracy Error | +/- 0.3 % of full scale at 25 °C |
| Temperature Drift | +/-0.005 %/°C |
| Insulation Between Channels And Logic Bus | 1500 V for 1 minute |
| Insulation Between Channels And Actuator Bus | 200 V |
| Product Compatibility | Power distribution module STBPDT3100/3105 Mounting base STBXBA1000 |
| [Us] Rated Supply Voltage | 24 V DC |
| Supply | Power distribution module |
| Current Consumption | 210 mA at 5 V DC for logic bus |
| Marking | CE |
| Overvoltage Category | II |

Disclaimer: This documentation is not intended as a substitute for and is not to be used for determining suitability or reliability of these products for specific user applications

| | |
|------------|---|
| Status Led | 1 LED (green) module status (RDY) 1 LED (red) module error (ERR) |
| Depth | 70 mm |
| Height | 18.4 mm |
| Width | 128.3 mm |

Environment

| | |
|---------------------------------------|---|
| Product Certifications | UL FM Class 1 Division 2 CSA |
| Pollution Degree | 2 conforming to IEC 60664-1 |
| Operating Altitude | <= 2000 m |
| Ip Degree Of Protection | IP20 conforming to IEC 61131-2 class 1 |
| Ambient Air Temperature For Operation | 0...60 °C (without) |
| Ambient Air Temperature For Operation | 32...140 °F without |
| Ambient Air Temperature For Storage | -40...85 °C without |
| Ambient Air Temperature For Storage | -40...185 °F without |
| Relative Humidity | 95 % at 60 °C without condensation |
| Vibration Resistance | 3 gn at 58...150 Hz on 35 x 7.5 mm symmetrical DIN rail 5 gn at 58...150 Hz on 35 x 15 mm symmetrical DIN rail +/-0.35 mm at 10...58 Hz |
| Shock Resistance | 30 gn for 11 ms conforming to IEC 88 reference 2-27 |

Packing Units

| | |
|------------------------------|-----------|
| Unit Type Of Package 1 | PCE |
| Number Of Units In Package 1 | 1 |
| Package 1 Height | 2.700 cm |
| Package 1 Width | 8.000 cm |
| Package 1 Length | 13.000 cm |
| Package 1 Weight | 136.000 g |
| Unit Type Of Package 2 | S02 |
| Number Of Units In Package 2 | 28 |
| Package 2 Height | 15.000 cm |
| Package 2 Width | 30.000 cm |
| Package 2 Length | 40.000 cm |
| Package 2 Weight | 4.234 kg |

Sustainability

Green Premium™ label is Schneider Electric's commitment to delivering products with best-in-class environmental performance. Green Premium promises compliance with the latest regulations, transparency on environmental impacts, as well as circular and low-CO₂ products.

Guide to assessing product sustainability is a white paper that clarifies global eco-label standards and how to interpret environmental declarations.

[Learn more about Green Premium >](#)

[Guide to assess a product's sustainability >](#)

Well-being performance



Mercury Free



Rohs Exemption Information

Yes

Reach Regulation

[REACH Declaration](#)

Eu Rohs Directive

Pro-active compliance (Product out of EU RoHS legal scope)

China Rohs Regulation

[China RoHS declaration](#)

Weee

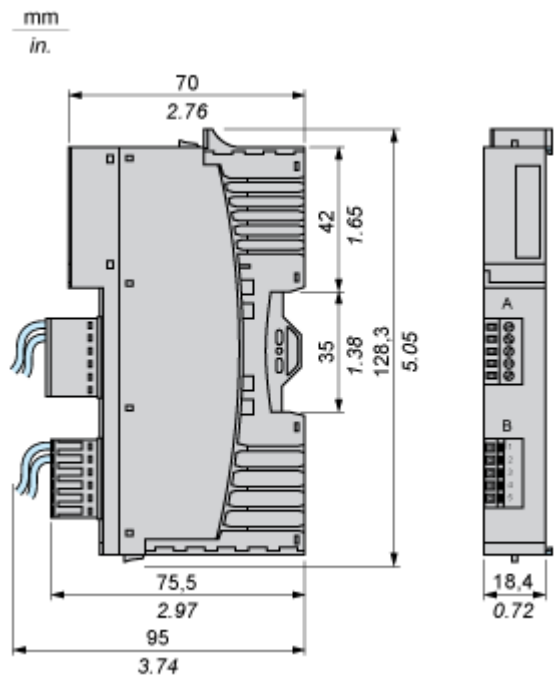
The product must be disposed on European Union markets following specific waste collection and never end up in rubbish bins

California Proposition 65

WARNING: This product can expose you to chemicals including: Lead and lead compounds, which is known to the State of California to cause cancer and birth defects or other reproductive harm. For more information go to www.P65Warnings.ca.gov

Dimensions Drawings

Dimensions

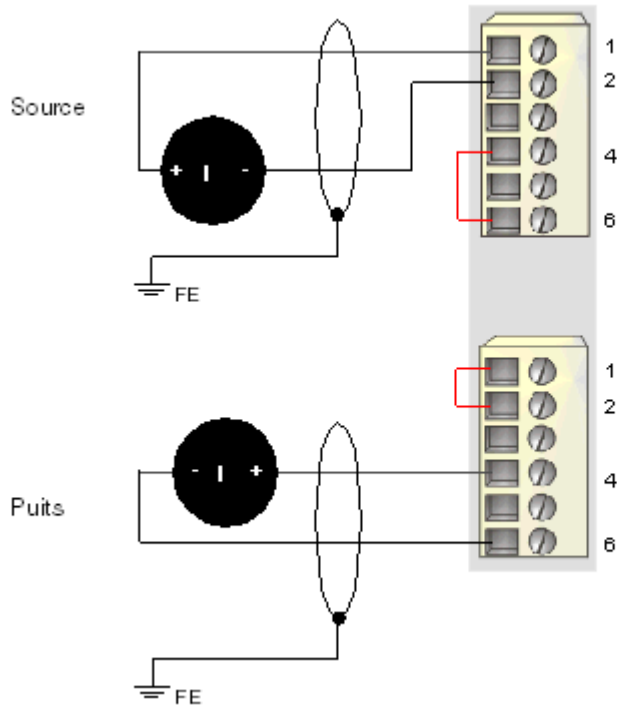


Connections and Schema

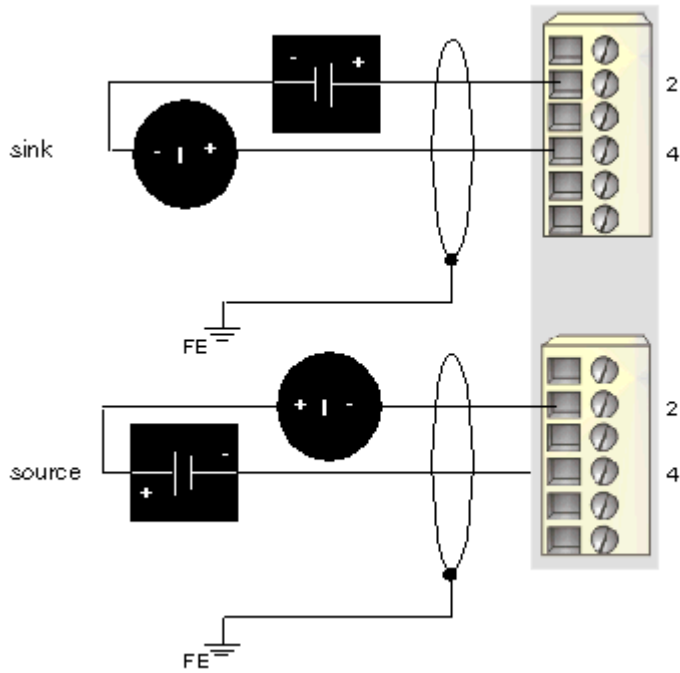
Wiring Diagrams

Examples

2 non-isolated analog actuators, 24 VDC supplied by the PDM



2 isolated analog actuators, external 24 VDC power supply



| Pin | Top Connections | Bottom Connections |
|-----|---------------------|---------------------|
| 1 | +24 VDC loop supply | +24 VDC loop supply |

| Pin | Top Connections | Bottom Connections |
|-----|-----------------------------------|-----------------------------------|
| 2 | output to actuator 1 | output to actuator 2 |
| 3 | no connection | no connection |
| 4 | output channel return | output channel return |
| 5 | no connection | no connection |
| 6 | loop power return (to the module) | loop power return (to the module) |