

Product data sheet

Specifications



TSX Micro - 28 I/O 24 V DC relay

TSXDMZ28DR

⚠ Discontinued on: Dec 31, 2019

⚠ To be end-of-service on: Dec 31, 2027

⚠ Discontinued - Service only

Main

Range Of Product	Modicon TSX Micro automation platform
Product Or Component Type	Discrete relay I/O base
Discrete Input Number	16 screw terminal block
Discrete Input Voltage	24 V DC, discrete input logic: negative
Discrete Input Current	9 mA

Complementary

Input Voltage Limits	<= 8 V at state 1
Current State 0 Guaranteed	<= 1.5 mA
Current State 1 Guaranteed	>= 2.5 mA
Input Impedance	4 Ohm
Response Time	0.1...7.5 ms input at state 0 to state 1 0.1...7.5 ms input at state 1 to state 0 < 10 ms output
Input Compatibility	2-wire/3-wire proximity sensor
Load Type	Resistive
Current Consumption	160 mA positive 131 mA negative
Power Dissipation In W	4.5 W
Output Voltage Limits	19...264 V AC 10...34 V DC
Contacts Type And Composition	NO
Power Consumption In Va	50 VA 24 V AC-12 resistive 110 VA 48 V AC-12 resistive 220 VA 110 V AC-12 resistive 220 VA 220 V AC-12 resistive 24 VA 24 V AC-15 inductive 24 VA 48 V AC-15 inductive 220 VA 220 V AC-15 inductive 110 VA 110 V AC-15 inductive
Power Consumption In W	40 W 24 V DC-12 resistive 24 W 24 V DC-13 inductive
Isolation Voltage	1500 V for 1 s
Insulation Resistance	>= 10 mOhm
Net Weight	0.5 kg

Disclaimer: This documentation is not intended as a substitute for and is not to be used for determining suitability or reliability of these products for specific user applications

Environment

Standards	IEC 1131-2 Type 1
[Ith] Conventional Free Air Thermal Current	3 A

Packing Units

Unit Type Of Package 1	PCE
Number Of Units In Package 1	1
Package 1 Height	5.5 cm
Package 1 Width	18.0 cm
Package 1 Length	26.0 cm
Package 1 Weight	582.0 g
Unit Type Of Package 2	S03
Number Of Units In Package 2	8
Package 2 Height	30.0 cm
Package 2 Width	30.0 cm
Package 2 Length	40.0 cm
Package 2 Weight	5.066 kg

Contractual warranty

Warranty	18 months
----------	-----------

Sustainability

Green Premium™ label is Schneider Electric's commitment to delivering products with best-in-class environmental performance. Green Premium promises compliance with the latest regulations, transparency on environmental impacts, as well as circular and low-CO₂ products.

Guide to assessing product sustainability is a white paper that clarifies global eco-label standards and how to interpret environmental declarations.

[Learn more about Green Premium >](#)

[Guide to assess a product's sustainability >](#)

Eu Rohs Directive	Not applicable, out of EU RoHS legal scope
China Rohs Regulation	China RoHS declaration
Weee	The product must be disposed on European Union markets following specific waste collection and never end up in rubbish bins
California Proposition 65	WARNING: This product can expose you to chemicals including: Lead and lead compounds which is known to the State of California to cause Carcinogen & Reproductive harm. For more information go to www.p65warnings.ca.gov

Connections and Schema

Sensors/Inputs and Actuators/Outputs Connections

Wiring Diagrams

Positive logic input (Sink)

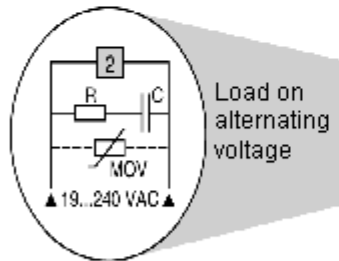


or

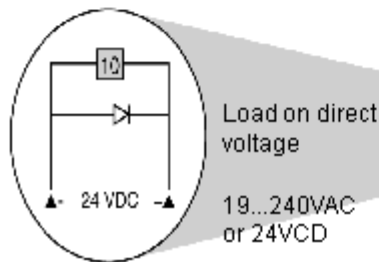


Inputs hardware configuration

Mandatory protection to be fitted to the terminals of each actuator

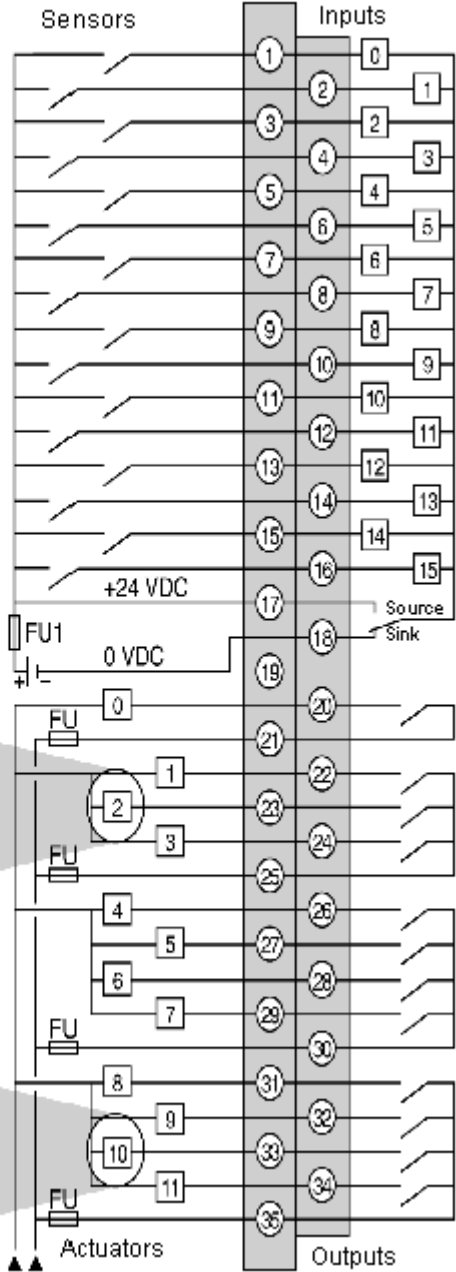


Load on alternating voltage



Load on direct voltage

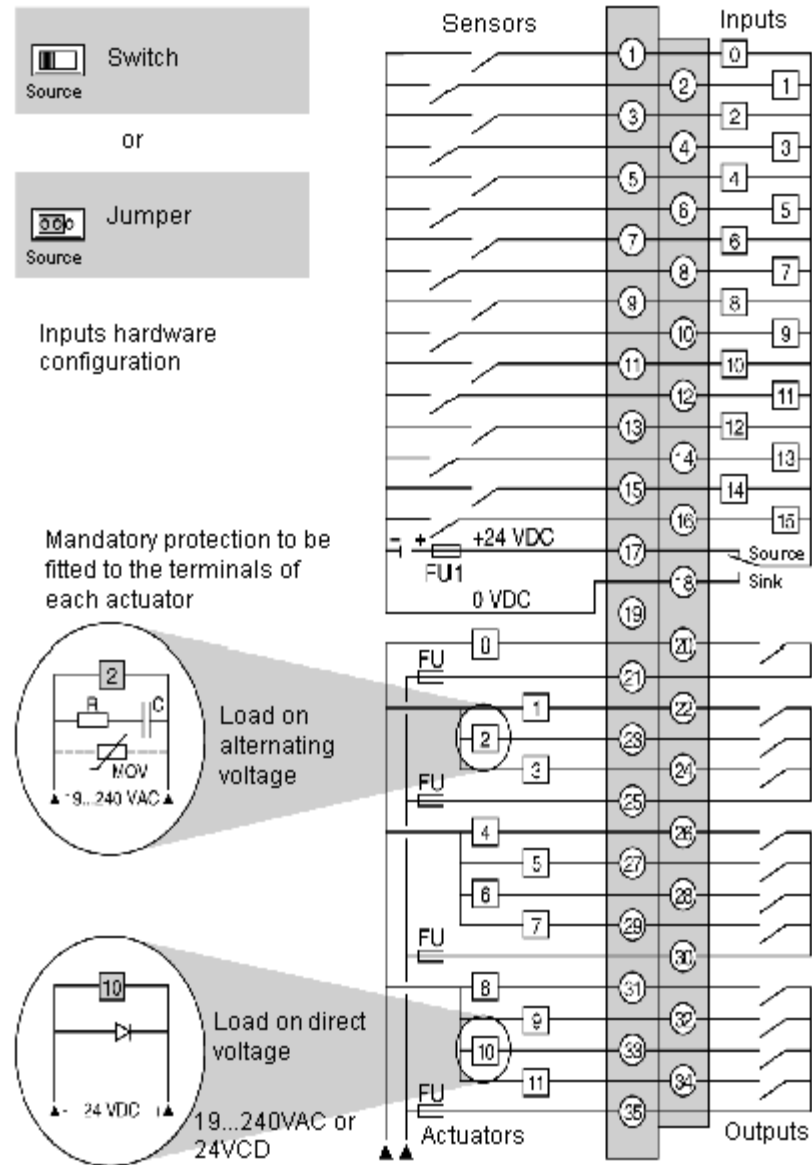
19...240VAC or 24VCD



FU1 = 0.5A fast-blow fuse.

FU = Fast-blow fuses to be calibrated according to the load.

Negative logic input (Source)



FU1 = 0.5A fast-blow fuse.
FU = Fast-blow fuses to be calibrated according to the load