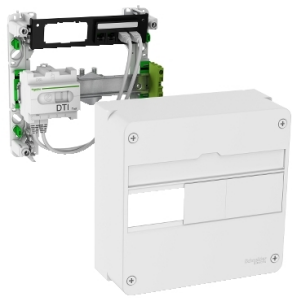


Product data sheet

Specifications



LexCom Home Essential - Eco Pack

VDIR390014

⚠ Discontinued on: May 24, 2022

⚠ Discontinued

Main

Range	LexCom Home
Product Name	LexCom Home Essential
Commercial Name	ECO Pack
Product Or Component Type	Network enclosure
Benefit	Distribution of TV, data and telephone on each RJ45 sockets, automatic patching
Pack Composition	1 x earth terminal block 1 x coaxial splitter 1 x patch panel 4 x RJ45 connector 4 x Resi9 fixing screws 1 x RJ45 DTI + telephone splitter 4 ways + ADSL filter 1 way 4 x telephone patch cords300 mm 1 x Resi9 enclosure 1 x DIN rail
Enclosure Type	Resi9 enclosure 13 module(s) 1 horizontal row(s)

Complementary

Splitter Type	Telephone: 1 telephone input RJ45 Telephone: 4 telephone outputs RJ45 Telephone: 1 ADSL output RJ45 TV: 4 coaxial outputs
Number Of Port	Patch panel 4 ports
Connector Type	RJ45 Cat. 5e UTP Actassi S-one
Patch Cord Type	Double patch cord RJ45 / RJ45 (x 2) Single patch cord RJ45 / RJ45, 0.3 m (x 4)
Room For	DTIO LexCom Home DIN rail Ethernet switch LexCom Home grid Patch panel LexCom Home enclosure
Length	250 mm
Height	112 mm
Width	252 mm
Net Weight	1.2 kg

Environment

Standards	NF C 15-100
-----------	-------------

Packing Units

Unit Type Of Package 1	PCE
------------------------	-----

Disclaimer: This documentation is not intended as a substitute for and is not to be used for determining suitability or reliability of these products for specific user applications

Number Of Units In Package 1	1
Package 1 Height	12.5 cm
Package 1 Width	26 cm
Package 1 Length	27 cm
Package 1 Weight	1.316 kg

Sustainability

Green Premium™ label is Schneider Electric's commitment to delivering products with best-in-class environmental performance. Green Premium promises compliance with the latest regulations, transparency on environmental impacts, as well as circular and low-CO₂ products.

Guide to assessing product sustainability is a white paper that clarifies global eco-label standards and how to interpret environmental declarations.

[Learn more about Green Premium >](#)

[Guide to assess a product's sustainability >](#)

Eu Rohs Directive	Under investigation
Weee	The product must be disposed on European Union markets following specific waste collection and never end up in rubbish bins