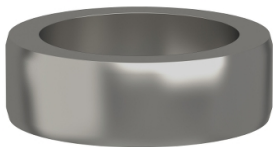


Product data sheet

Specifications



locating dowels, Lexium PAS,
3,8xd12/d9, 20 pieces

VW33MF020LD03

Main

Range Of Product	Lexium linear motion
Product Or Component Type	Adaptor
Accessory / Separate Part Category	Maintenance accessories

Complementary

Product Compatibility	PAS 44 linear axis, outer dimension : 110 x 110 mm CAS 44 linear axis, outer dimension : 110 x 110 mm CAS 34 cantilever axis, outer dimension : 160 x 50 mm
Range Compatibility	Lexium CAS Lexium PAS

Packing Units

Unit Type Of Package 1	PCE
Number Of Units In Package 1	1
Package 1 Height	6.0 cm
Package 1 Width	12.0 cm
Package 1 Length	16.0 cm
Package 1 Weight	128.0 g

Contractual warranty

Warranty	18 months
----------	-----------

Disclaimer: This documentation is not intended as a substitute for and is not to be used for determining suitability or reliability of these products for specific user applications

Sustainability

Green Premium™ label is Schneider Electric’s commitment to delivering products with best-in-class environmental performance. Green Premium promises compliance with the latest regulations, transparency on environmental impacts, as well as circular and low-CO₂ products.

Guide to assessing product sustainability is a white paper that clarifies global eco-label standards and how to interpret environmental declarations.

[Learn more about Green Premium >](#)

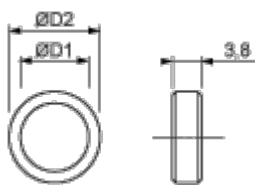
[Guide to assess a product’s sustainability >](#)

Well-being performance

✓	Reach Free Of Svhc	
✓	Toxic Heavy Metal Free	
✓	Mercury Free	
✓	Rohs Exemption Information	Yes
✓	Pvc Free	
Reach Regulation	REACH Declaration	
Eu Rohs Directive	Pro-active compliance (Product out of EU RoHS legal scope) EU RoHS Declaration	
China Rohs Regulation	China RoHS declaration	
California Proposition 65	WARNING: This product can expose you to chemicals including: Lead and lead compounds, which is known to the State of California to cause cancer and birth defects or other reproductive harm. For more information go to www.P65Warnings.ca.gov	

Dimensions Drawings

Dimensions



Dimensions in mm

ØD1	ØD2
9	12 h6

Dimensions in in.

ØD1	ØD2
0.35	0.47 h6