

Product data sheet

Specifications



EMC radio interference input filter - for variable speed drive - 160 A

VW3A4707

Main

Range Of Product	Altivar
Product Or Component Type	EMC input filter
Range Compatibility	Altivar Process ATV900 Altivar Machine ATV340 Altivar Process ATV600
Product Compatibility	Variable speed drive ATV630 wall mount, motor: 55 kW, 380...480 V Variable speed drive ATV630 wall mount, motor: 30 kW, 200...240 V Variable speed drive ATV630 wall mount, motor: 37 kW, 200...240 V Variable speed drive ATV650 wall mount, motor: 55 kW, 380...480 V Variable speed drive ATV930 wall mount, motor: 55 kW, 380...480 V Variable speed drive ATV930 wall mount, motor: 30 kW, 200...240 V Variable speed drive ATV930 wall mount, motor: 37 kW, 200...240 V Variable speed drive ATV950 wall mount, motor: 55 kW, 380...480 V Variable speed drive ATV340 motor: 45 kW, 380...480 V
Product Specific Application	Radio interference input filter
Mounting Location	At variable speed drive side
[In] Rated Current	160 A
Thermal Losses	25 W
Network Number Of Phases	Three phase

Complementary

Electrical Connection	Terminal 150 mm² 300 kcmil
Maximum Motor Cable Length	150 m shielded motor cable 4 kHz conforming to IEC 61800-3 category C2, 380...480 V 300 m shielded motor cable 4 kHz conforming to IEC 61800-3 category C3, 380...480 V 150 m shielded motor cable 4 kHz conforming to IEC 61800-3 category C2, 200...240 V 300 m shielded motor cable 4 kHz conforming to IEC 61800-3 category C3, 200...240 V 50 m shielded motor cable 4 kHz conforming to IEC 61800-3 category C1, 200...240 V 50 m shielded motor cable 4 kHz conforming to IEC 61800-3 category C1, 380...480 V
Maximum Earth Leakage Current	13.9 mA at 400 V 50 Hz TN 13.9 mA at 400 V 50 Hz TT
Power Supply Voltage	200...240 V 380...480 V
Tolerance	10 %
Mechanical Robustness	Shocks class 3M4 conforming to IEC 60721-3-3 Vibrations class 3M4 conforming to IEC 60721-3-3
Width	130 mm
Height	395 mm

Disclaimer: This documentation is not intended as a substitute for and is not to be used for determining suitability or reliability of these products for specific user applications

Depth	240 mm
Net Weight	8.5 kg
Environment	
Ip Degree Of Protection	IP20mounting side by side IP21with kit VW3A47907
Relative Humidity	5...95 % without condensation conforming to IEC 61800-5-1
Ambient Air Temperature For Operation	-10...50 °C (without current derating) 50...60 °C (with current derating 1.5 % per °C)
Ambient Air Temperature For Storage	-40...70 °C
Operating Altitude	0...1000 m without current derating 1000...4000 m with current derating 1 % per 100 m
Standards	IEC 61800-3

Packing Units

Unit Type Of Package 1	PCE
Number Of Units In Package 1	1
Package 1 Height	19.000 cm
Package 1 Width	29.500 cm
Package 1 Length	46.000 cm
Package 1 Weight	9.871 kg
Unit Type Of Package 2	P06
Number Of Units In Package 2	12
Package 2 Height	75.000 cm
Package 2 Width	60.000 cm
Package 2 Length	80.000 cm
Package 2 Weight	126.452 kg

Sustainability





Green Premium™ label is Schneider Electric's commitment to delivering products with best-in-class environmental performance. Green Premium promises compliance with the latest regulations, transparency on environmental impacts, as well as circular and low-CO₂ products.

Guide to assessing product sustainability is a white paper that clarifies global eco-label standards and how to interpret environmental declarations.

[Learn more about Green Premium >](#)

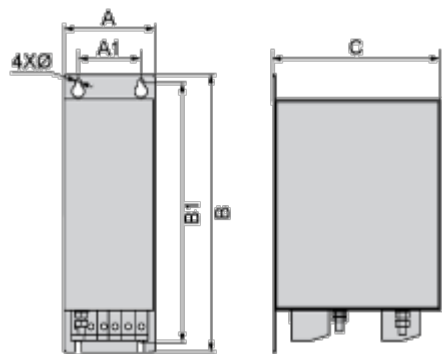
[Guide to assess a product's sustainability >](#)

Well-being performance

 Reach Free Of Svhc	
 Toxic Heavy Metal Free	
 Mercury Free	
 Rohs Exemption Information	Yes
Reach Regulation	REACH Declaration
Eu Rohs Directive	Pro-active compliance (Product out of EU RoHS legal scope) EU RoHS Declaration
China Rohs Regulation	China RoHS declaration
California Proposition 65	WARNING: This product can expose you to chemicals including: Lead and lead compounds, which is known to the State of California to cause cancer and birth defects or other reproductive harm. For more information go to www.P65Warnings.ca.gov

Dimensions Drawings

Dimensions



Dimensions in mm

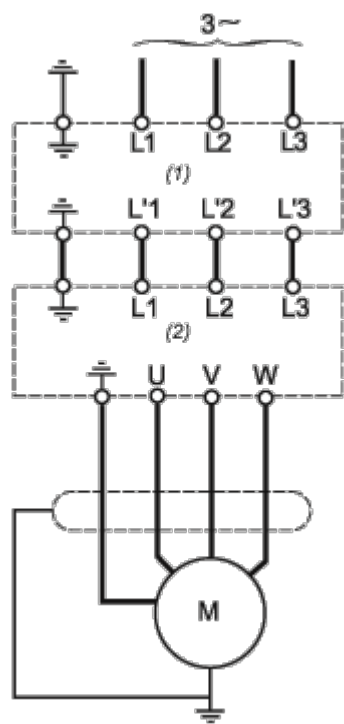
A	B	C	A1	B1	Ø
130	395	240	90	372	9

Dimensions in in.

A	B	C	A1	B1	Ø
5.1	15.6	9.4	3.5	14.6	0.35

Connections and Schema

Recommended Schema



- (1) Filter
- (2) Drive