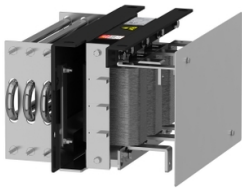


Product data sheet

Specifications



output dv dt filter, Altivar, for variable speed drive, 30 to 90kW, 180A, IP00

VW3A5306

Main

Product Or Component Type	Dv/dt filter
Range Compatibility	Altivar Process ATV900 Easy Altivar 610 Altivar Process ATV600 Altivar Machine ATV340
Product Specific Application	Output filter
[In] Rated Current	180 A
Product Compatibility	ATV630 variable speed drive wall mount - 30 kW, 200...240 V ATV630 variable speed drive wall mount - 37 kW, 200...240 V ATV630 variable speed drive wall mount - 45 kW, 200...240 V ATV630 variable speed drive wall mount - 55 kW, 380...480 V ATV630 variable speed drive wall mount - 75 kW, 380...480 V ATV630 variable speed drive wall mount - 90 kW, 380...480 V ATV650 variable speed drive wall mount - 55 kW, 380...480 V ATV650 variable speed drive wall mount - 75 kW, 380...480 V ATV650 variable speed drive wall mount - 90 kW, 380...480 V ATV610 variable speed drive - 55 kW, 380...415 V ATV610 variable speed drive - 75 kW, 380...415 V ATV610 variable speed drive - 90 kW, 380...415 V ATV930 variable speed drive wall mount - 30 kW, 200...240 V ATV930 variable speed drive wall mount - 37 kW, 200...240 V ATV930 variable speed drive wall mount - 45 kW, 200...240 V ATV930 variable speed drive wall mount - 55 kW, 380...480 V ATV930 variable speed drive wall mount - 75 kW, 380...480 V ATV930 variable speed drive wall mount - 90 kW, 380...480 V ATV950 variable speed drive wall mount - 55 kW, 380...480 V ATV950 variable speed drive wall mount - 75 kW, 380...480 V ATV950 variable speed drive wall mount - 90 kW, 380...480 V
Nedded Quantity	1
Electrical Connection	Copper bar M10, connection capacity: 120 mm² / AWG 4/0

Complementary

Maximum Motor Cable Length	500 m unshielded cable 300 m shielded cable
Dv/Dt	3000 V/µs max at 200...240 V 3000 V/µs max at 380...480 V
Thermal Losses	176 W at 4 kHz
Maximum Drive Output Frequency	100 Hz
Ambient Air Temperature For Operation	-10...50 °C (without current derating) 50...60 °C (with current derating 1.5 % per °C)
Operating Altitude	0...1000 m without current derating 1000...4000 m with current derating 1 % per 100 m
Width	380 mm
Height	350 mm

Disclaimer: This documentation is not intended as a substitute for and is not to be used for determining suitability or reliability of these products for specific user applications

Depth	235 mm
Net Weight	22 kg

Environment

Ip Degree Of Protection	IP00
Ambient Air Temperature For Storage	-40...70 °C

Packing Units

Unit Type Of Package 1	PCE
Number Of Units In Package 1	1
Package 1 Height	37.700 cm
Package 1 Width	39.800 cm
Package 1 Length	44.500 cm
Package 1 Weight	29.400 kg

Sustainability

Green Premium™ label is Schneider Electric's commitment to delivering products with best-in-class environmental performance. Green Premium promises compliance with the latest regulations, transparency on environmental impacts, as well as circular and low-CO₂ products.

Guide to assessing product sustainability is a white paper that clarifies global eco-label standards and how to interpret environmental declarations.

[Learn more about Green Premium >](#)

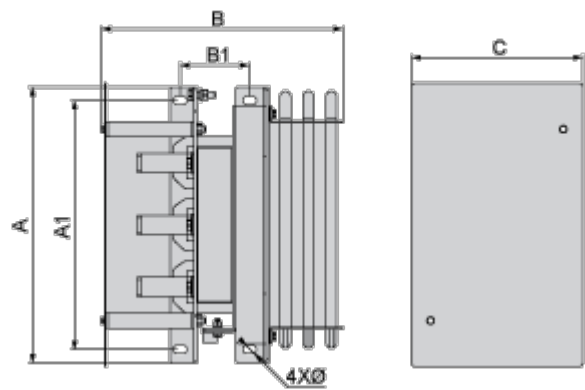
[Guide to assess a product's sustainability >](#)

Well-being performance

✓	Reach Free Of Svhc	
✓	Toxic Heavy Metal Free	
✓	Mercury Free	
✓	Rohs Exemption Information	Yes
Reach Regulation	REACH Declaration	
Eu Rohs Directive	Pro-active compliance (Product out of EU RoHS legal scope) EU RoHS Declaration	
China Rohs Regulation	China RoHS declaration	
California Proposition 65	WARNING: This product can expose you to chemicals including: Lead and lead compounds, which is known to the State of California to cause cancer and birth defects or other reproductive harm. For more information go to www.P65Warnings.ca.gov	

Dimensions Drawings

Dimensions



Dimensions in mm

A	B	C	A1	B1	Ø
380	325	235	325	91	11

Dimensions in in.

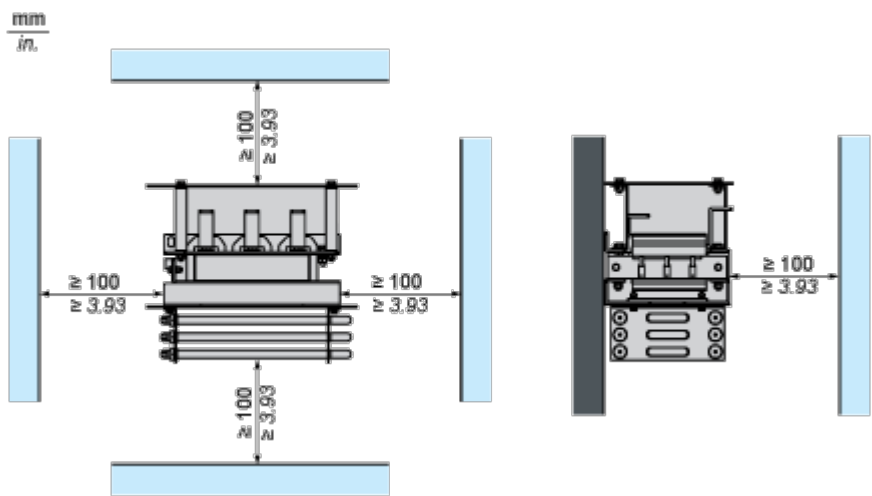
A	B	C	A1	B1	Ø
15	12.8	9.3	12.8	3.6	0.43

Mounting and Clearance

Mounting and Clearance

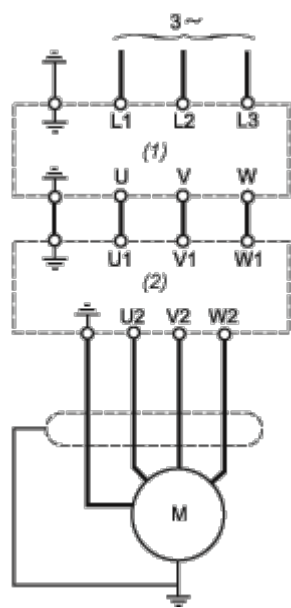


(1) Filter



Connections and Schema

Recommended Schema



- (1) Drive
- (2) Filter