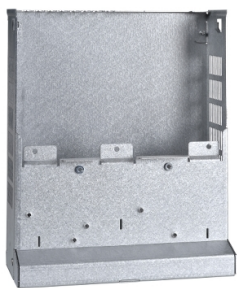


Product data sheet

Specifications



kit for IP21 conformity - for variable speed drive - ATV61/ATV71

VW3A9101

⚠ Discontinued on: Jan 29, 2021

⚠ Discontinued

Main

Accessory / Separate Part Category	Mounting and fixing accessory
Accessory / Separate Part Type	IP21 conformity kit
Product Compatibility	ATV61H075M3 ATV61H075N4 ATV61HU15M3 ATV61HU15N4 ATV61HU22N4 ATV71H037M3 ATV71H075M3 ATV71H075N4 ATV71HU15M3 ATV71HU15N4 ATV71HU22N4 ATV71P075N4Z ATV71PU15N4Z ATV71PU22N4Z
Accessory / Separate Part Destination	Variable speed drive
Range Compatibility	Altivar 71 Altivar 61

Complementary

Kit Composition	All the mechanical parts including a pre-cut plate for fixing the cable glands 1 manual Fixing accessories
Net Weight	1.3 kg

Packing Units

Unit Type Of Package 1	PCE
Number Of Units In Package 1	1
Package 1 Height	12 cm
Package 1 Width	30 cm
Package 1 Length	40 cm
Package 1 Weight	1.209 kg

Contractual warranty

Warranty	18 months
----------	-----------

Disclaimer: This documentation is not intended as a substitute for and is not to be used for determining suitability or reliability of these products for specific user applications

Sustainability




Green Premium™ label is Schneider Electric’s commitment to delivering products with best-in-class environmental performance. Green Premium promises compliance with the latest regulations, transparency on environmental impacts, as well as circular and low-CO₂ products.

Guide to assessing product sustainability is a white paper that clarifies global eco-label standards and how to interpret environmental declarations.

[Learn more about Green Premium >](#)

[Guide to assess a product’s sustainability >](#)

Well-being performance

 Reach Free Of Svhc	
 Mercury Free	
 Rohs Exemption Information	Yes
Eu Rohs Directive	Pro-active compliance (Product out of EU RoHS legal scope) EU RoHS Declaration
China Rohs Regulation	China RoHS declaration
California Proposition 65	WARNING: This product can expose you to chemicals including: Lead and lead compounds, which is known to the State of California to cause cancer and birth defects or other reproductive harm. For more information go to www.P65Warnings.ca.gov