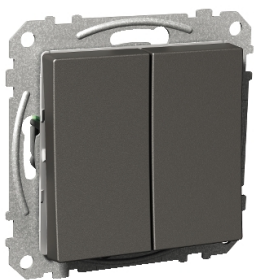


Product data sheet

Specifications



2 Switch, Exxact, mechanism with fixing frame, 2-circuits, 16A, screw terminals, anthracite

WDE003217

Main

Range	Exxact
Product Or Component Type	Switch
Device Application	Control
Technology Type	Electromechanical
Quantity Per Set	Set of 5

Complementary

Device Presentation	Mechanism with fixing frame
Device Mounting	Flush
Number Of Rocker	2
Switch Function	2-circuits
Switch Pattern	[5]
Rated Current	16 A
[Ue] Rated Operational Voltage	250 V
Network Type	AC
Colour	Anthracite
Connections - Terminals	Screw terminals
Loop Terminals	2
Shape Of Screw Head	Pozidriv No 1 and combi
Clamping Connection Capacity	1 x 1.5...2 x 2.5 mm ² for solid cable(s) 1 x 1.5...2 x 2.5 mm ² for solid stranded cable(s)
Material	ABS (acrylonitrile butadiene-styrene)
Optional Fixing Mode	By claw kit: insert By screw: rocker
Embedding Depth	15 mm
Height	71 mm
Width	71 mm
Projecting Depth	18 mm

Environment

Standards	EN 60669-1
-----------	------------

Disclaimer: This documentation is not intended as a substitute for and is not to be used for determining suitability or reliability of these products for specific user applications

Product Certifications	NEMKO CE FIMKO SEMKO
Ip Degree Of Protection	IP20 IP44 with additional sealing kit

Packing Units

Unit Type Of Package 1	PCE
Number Of Units In Package 1	1
Package 1 Height	7 cm
Package 1 Width	7 cm
Package 1 Length	4 cm
Package 1 Weight	69 g
Unit Type Of Package 2	BB1
Number Of Units In Package 2	5
Package 2 Height	8.6 cm
Package 2 Width	11.9 cm
Package 2 Length	17 cm
Package 2 Weight	394 g
Unit Type Of Package 3	CAR
Number Of Units In Package 3	60
Package 3 Height	27.2 cm
Package 3 Width	24.8 cm
Package 3 Length	35 cm
Package 3 Weight	5 kg

Contractual warranty

Warranty	18 months
----------	-----------

Sustainability

Green Premium™ label is Schneider Electric's commitment to delivering products with best-in-class environmental performance. Green Premium promises compliance with the latest regulations, transparency on environmental impacts, as well as circular and low-CO₂ products.

Guide to assessing product sustainability is a white paper that clarifies global eco-label standards and how to interpret environmental declarations.

[Learn more about Green Premium >](#)

[Guide to assess a product's sustainability >](#)



Transparency RoHS/REACH

Well-being performance

✓ Reach Free Of Svhc

✓ Toxic Heavy Metal Free

✓ Mercury Free

✓ Rohs Exemption Information Yes

Certifications & Standards

Reach Regulation	REACH Declaration
Eu Rohs Directive	Compliant EU RoHS Declaration
China Rohs Regulation	China RoHS declaration Pro-active China RoHS declaration (out of China RoHS legal scope)
Environmental Disclosure	Product Environmental Profile
Weee	The product must be disposed on European Union markets following specific waste collection and never end up in rubbish bins
Circularity Profile	No need of specific recycling operations