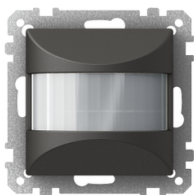


Product data sheet

Specifications



Movement detector, Exxact, KNX, PIR 180°, dark

WDE003957

⚠ Discontinued on: Jul 27, 2022

⚠ Discontinued

Main

Range	Exxact
Aesthetic Name	Primo
Product Or Component Type	Movement detector
Bus Type	KNX
Number Of Channels	5

Complementary

Device Presentation	Mechanism with fixing frame
Sensor Type	PIR
Type Of Setting	Light sensitivity adjustable
Device Mounting	Flush
Standby Consumption	Max. 0.4 W
Mounting Height	1.1 m
Detection Face	Frontal: 8 m
Detection Angle	180° horizontal
Number Of Zones	14
Light Intensity Adjustment	10...2000 lux
Duty Cycle	15300 minutes
Time Delay	1 s...8 min
Colour Tint	Anthracite (RAL 7021)
Connections - Terminals	Screw terminal
Material	PC (polycarbonate) GF10 FR
Surface Finish	Matt
Fixing Mode	By screws
Ambient Air Temperature For Operation	5...40 °C
Ambient Air Temperature For Storage	5...40 °C
Ip Degree Of Protection	IP20
Ik Degree Of Protection	IK02
Standards	EN 60669-2-1
Quantity Per Set	Set of 1

Disclaimer: This documentation is not intended as a substitute for and is not to be used for determining suitability or reliability of these products for specific user applications

Height	71 mm
Width	71 mm
Depth	49 mm

Packing Units

Unit Type Of Package 1	PCE
Number Of Units In Package 1	1
Package 1 Height	8.9 cm
Package 1 Width	7.6 cm
Package 1 Length	7.6 cm
Package 1 Weight	92 g

Contractual warranty

Warranty	18 months
----------	-----------

Sustainability

Green Premium™ label is Schneider Electric's commitment to delivering products with best-in-class environmental performance. Green Premium promises compliance with the latest regulations, transparency on environmental impacts, as well as circular and low-CO₂ products.

Guide to assessing product sustainability is a white paper that clarifies global eco-label standards and how to interpret environmental declarations.

[Learn more about Green Premium >](#)

[Guide to assess a product's sustainability >](#)



RoHS/REACH

Well-being performance

✓ Toxic Heavy Metal Free

✓ Mercury Free

✓ Rohs Exemption Information [Yes](#)

Certifications & Standards

Eu Rohs Directive	Compliant
	EU RoHS Declaration

China Rohs Regulation	China RoHS declaration
	Pro-active China RoHS declaration (out of China RoHS legal scope)

Weee	The product must be disposed on European Union markets following specific waste collection and never end up in rubbish bins
------	---