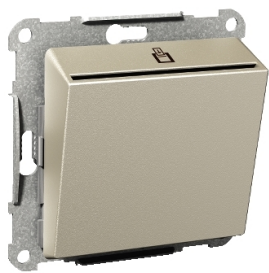


Product data sheet

Specifications



Card switch, Exxact, mechanism with fixing frame, 2-pole 2-way, 16A, screw terminals, metallic

WDE004053

Main

Range Of Product	Exxact
Product Or Component Type	Card switch
Device Application	Control
Device Presentation	Mechanism with fixing frame
Quantity Per Set	Set of 1

Complementary

Technology Type	Electromechanical
Wiring Device Mounting	Flush
Switch Pattern	[6 / 2 / 1]
Switch Function	2-pole 2-way
[Ue] Rated Operational Voltage	250 V
Rated Current	16 A 10 AX
Network Type	AC
Colour	Metallic
Local Signalling	White LED - 10 mA
Connections - Terminals	Screw terminals
Number Of Loop Terminals	2
Shape Of Screw Head	Pozidriv No 1 and combi
Clamping Connection Capacity	1 x 1.5...2 x 2.5 mm² for solid cable(s) 1 x 1.5...2 x 2.5 mm² for solid stranded cable(s)
Material	ABS (acrylonitrile butadiene-styrene)
Optional Fixing Mode	By claw kit: insert By screw: rocker
Embedding Depth	12 mm
Height	71 mm
Width	71 mm
Projecting Depth	28 mm

Environment

Standards	EN 60669-1
-----------	------------

Disclaimer: This documentation is not intended as a substitute for and is not to be used for determining suitability or reliability of these products for specific user applications

Product Certifications	CE FIMKO NEMKO SEMKO
Ip Degree Of Protection	IP20

Packing Units

Unit Type Of Package 1	PCE
Number Of Units In Package 1	1
Package 1 Height	6.400 cm
Package 1 Width	8.200 cm
Package 1 Length	8.800 cm
Package 1 Weight	100.000 g
Unit Type Of Package 2	BB1
Number Of Units In Package 2	12
Package 2 Height	12.200 cm
Package 2 Width	17.200 cm
Package 2 Length	25.600 cm
Package 2 Weight	1.278 kg
Unit Type Of Package 3	P12
Number Of Units In Package 3	2880
Package 3 Height	111.000 cm
Package 3 Width	80.000 cm
Package 3 Length	120.000 cm
Package 3 Weight	310.640 kg

Contractual warranty

Warranty	18 months
----------	-----------

Sustainability

Green Premium™ label is Schneider Electric's commitment to delivering products with best-in-class environmental performance. Green Premium promises compliance with the latest regulations, transparency on environmental impacts, as well as circular and low-CO₂ products.

Guide to assessing product sustainability is a white paper that clarifies global eco-label standards and how to interpret environmental declarations.

[Learn more about Green Premium >](#)

[Guide to assess a product's sustainability >](#)



Transparency RoHS/REACH

Well-being performance

✓ Reach Free Of Svhc

✓ Toxic Heavy Metal Free

✓ Mercury Free

✓ Rohs Exemption Information Yes

Certifications & Standards

Reach Regulation	REACH Declaration
Eu Rohs Directive	Compliant EU RoHS Declaration
China Rohs Regulation	China RoHS declaration Pro-active China RoHS declaration (out of China RoHS legal scope)
Environmental Disclosure	Product Environmental Profile
Circularity Profile	No need of specific recycling operations