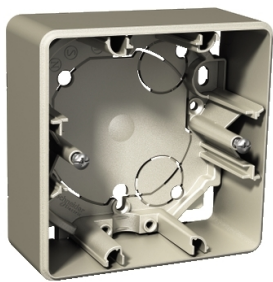


# Product data sheet

Specifications



## Exxact surface mounted box 1-gang high (35mm) metallic

WDE004710

 **Discontinued on:** Jun 30, 2023

 **Discontinued**

### Main

Range	Exxact
Product Or Component Type	Mounting box

### Complementary

Device Mounting	Surface
Number Of Gangs	1 gang
Colour	Metallic
Material	ABS (acrylonitrile butadiene-styrene)
Quantity Per Set	Set of 10
Height	85 mm
Width	85 mm
Projecting Depth	35 mm

### Environment

Standards	IEC 60884-1 EN 60670-1
Product Certifications	SEMKO FIMKO NEMKO CE
Ip Degree Of Protection	IP21

### Packing Units

Unit Type Of Package 1	PCE
Number Of Units In Package 1	1
Package 1 Height	6.4 cm
Package 1 Width	10 cm
Package 1 Length	9.9 cm
Package 1 Weight	54 g
Unit Type Of Package 2	BB1
Number Of Units In Package 2	10
Package 2 Height	11.6 cm
Package 2 Width	18.8 cm

Disclaimer: This documentation is not intended as a substitute for and is not to be used for determining suitability or reliability of these products for specific user applications

Package 2 Length	26 cm
Package 2 Weight	658 g
Unit Type Of Package 3	CAR
Number Of Units In Package 3	60
Package 3 Height	34.8 cm
Package 3 Width	29.6 cm
Package 3 Length	39.4 cm
Package 3 Weight	4.366 kg

## Contractual warranty

Warranty	18 months
----------	-----------

## Sustainability

**Green Premium™ label** is Schneider Electric's commitment to delivering products with best-in-class environmental performance. Green Premium promises compliance with the latest regulations, transparency on environmental impacts, as well as circular and low-CO<sub>2</sub> products.

**Guide to assessing product sustainability** is a white paper that clarifies global eco-label standards and how to interpret environmental declarations.

[Learn more about Green Premium >](#)

[Guide to assess a product's sustainability >](#)



Transparency   RoHS/REACH

## Well-being performance

✓ Reach Free Of Svhc

✓ Toxic Heavy Metal Free

✓ Mercury Free

✓ Rohs Exemption Information   Yes

## Certifications & Standards

Reach Regulation	<a href="#">REACH Declaration</a>
Eu Rohs Directive	Compliant <a href="#">EU RoHS Declaration</a>
China Rohs Regulation	<a href="#">China RoHS declaration</a> Pro-active China RoHS declaration (out of China RoHS legal scope)
Environmental Disclosure	<a href="#">Product Environmental Profile</a>
Circularity Profile	No need of specific recycling operations