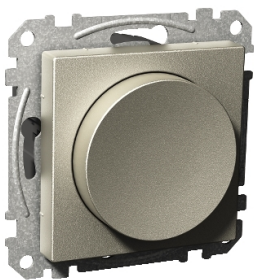



Product data sheet

Specifications



Exxact transistordimmer 630W metallic

WDE004813

 **Discontinued on:** Mar 29, 2021

 **Discontinued**

Main

Range	Exxact
Product Or Component Type	Dimmer
Colour Tint	Metallic
Quantity Per Set	Set of 1

Complementary

Device Presentation	Mechanism with fixing frame
Device Mounting	Flush
Device Application	Light control
Switch Function	1-pole 2-way
Dimmer Type	Transistor
Dimmer Control	Rotary push type
Fixing Mode	By screws
Rated Current	10 A
[Ue] Rated Operational Voltage	230 V
Network Type	AC
Network Frequency	50 Hz
Surface Finish	Painted
Load Type	Incandescent lamp: 60...630 W at 230 V AC Halogen lamp: 60...600 W at 230 V AC Electronic transformer: 60...630 W at 230 V AC
Protection Type	Short-circuit protection Automatic overload protection
Connections - Terminals	Screw terminals
Shape Of Screw Head	Pozidriv No 1 and combi
Tightening Torque	0.5 N.m
Clamping Connection Capacity	1 x 1.5...2 x 2.5 mm ² for solid cable(s) 1 x 1.5...2 x 2.5 mm ² for solid stranded cable(s)
Wire Stripping Length	6 mm
Material	ABS (acrylonitrile butadiene-styrene)
Height	71 mm
Width	71 mm

Disclaimer: This documentation is not intended as a substitute for and is not to be used for determining suitability or reliability of these products for specific user applications

Embedding Depth	29 mm
Product Certifications	NEMKO CE FIMKO SEMKO

Environment

Ip Degree Of Protection	IP20 IP44 with additional sealing kit
Ik Degree Of Protection	IK02
Standards	EN 60669-1 EN 60669-2-1

Packing Units

Unit Type Of Package 1	PCE
Number Of Units In Package 1	1
Package 1 Height	6 cm
Package 1 Width	7.5 cm
Package 1 Length	7.5 cm
Package 1 Weight	1 kg

Contractual warranty

Warranty	18 months
----------	-----------

Sustainability

Green Premium™ label is Schneider Electric’s commitment to delivering products with best-in-class environmental performance. Green Premium promises compliance with the latest regulations, transparency on environmental impacts, as well as circular and low-CO₂ products.

Guide to assessing product sustainability is a white paper that clarifies global eco-label standards and how to interpret environmental declarations.

[Learn more about Green Premium >](#)

[Guide to assess a product’s sustainability >](#)



Transparency RoHS/REACH

Well-being performance

✓ Mercury Free

✓ Rohs Exemption Information [Yes](#)

Certifications & Standards

Reach Regulation	REACH Declaration
Eu Rohs Directive	Compliant with Exemptions
China Rohs Regulation	China RoHS declaration Product out of China RoHS scope. Substance declaration for your information
Environmental Disclosure	Product Environmental Profile
Weee	The product must be disposed on European Union markets following specific waste collection and never end up in rubbish bins
Circularity Profile	No need of specific recycling operations